

Daugavpils-Judovka

Date: 08.11.2013
Operator:

Operator
Telephone
Fax
e-Mail

Table of contents

Daugavpils-Judovka	
Project Cover	1
Table of contents	2
Luminaire parts list	7
LED 76W	
Luminaire Data Sheet	8
LED 52W	
Luminaire Data Sheet	9
LED 65W	
Luminaire Data Sheet	10
1.maija iela	
Planning data	11
Luminaire parts list	12
Valuation Fields	
Valuation Field Roadway 1	
Observer	
Observer 1	
Isolines (L)	13
Amatnieku iela	
Planning data	14
Luminaire parts list	15
Valuation Fields	
Valuation Field Roadway 1	
Observer	
Observer 1	
Isolines (L)	16
Austrumu ielā	
Planning data	17
Luminaire parts list	18
Valuation Fields	
Valuation Field Roadway 1	
Observer	
Observer 1	
Isolines (L)	19
Observer 2	
Isolines (L)	20
Braslavas iela	
Planning data	21
Luminaire parts list	22
Valuation Fields	
Valuation Field Roadway 1	
Observer	
Observer 1	
Isolines (L)	23
Observer 2	
Isolines (L)	24
Demenes iela	
Planning data	25
Luminaire parts list	26
Valuation Fields	
Valuation Field Roadway 1	
Observer	
Observer 1	
Isolines (L)	27

Operator
Telephone
Fax
e-Mail

Table of contents

Elernes iela	
Planning data	28
Luminaire parts list	29
Valuation Fields	
Valuation Field Roadway 1	
Observer	
Observer 1	
Isolines (L)	30
Kaplavas iela	
Planning data	31
Luminaire parts list	32
Valuation Fields	
Valuation Field Roadway 1	
Observer	
Observer 1	
Isolines (L)	33
Observer 2	
Isolines (L)	34
Kooperācijas iela	
Planning data	35
Luminaire parts list	36
Valuation Fields	
Valuation Field Roadway 1	
Observer	
Observer 1	
Isolines (L)	37
Observer 2	
Isolines (L)	38
Krāslavas iela	
Planning data	39
Luminaire parts list	40
Valuation Fields	
Valuation Field Roadway 1	
Observer	
Observer 1	
Isolines (L)	41
Observer 2	
Isolines (L)	42
Krinīcas iela	
Planning data	43
Luminaire parts list	44
Valuation Fields	
Valuation Field Roadway 1	
Observer	
Observer 1	
Isolines (L)	45
Lejas iela	
Planning data	46
Luminaire parts list	47
Valuation Fields	
Valuation Field Roadway 1	
Observer	
Observer 1	
Isolines (L)	48

Operator
Telephone
Fax
e-Mail

Table of contents

Lielā iela	
Planning data	49
Luminaire parts list	50
Valuation Fields	
Valuation Field Roadway 1	
Observer	
Observer 1	
Isolines (L)	51
Observer 2	
Isolines (L)	52
Neļķu iela	
Planning data	53
Luminaire parts list	54
Valuation Fields	
Valuation Field Roadway 1	
Observer	
Observer 1	
Isolines (L)	55
Observer 2	
Isolines (L)	56
Odesas iela	
Planning data	57
Luminaire parts list	58
Valuation Fields	
Valuation Field Roadway 1	
Observer	
Observer 1	
Isolines (L)	59
Ostrovska iela	
Planning data	60
Luminaire parts list	61
Valuation Fields	
Valuation Field Roadway 1	
Observer	
Observer 1	
Isolines (L)	62
Pīlādžu iela	
Planning data	63
Luminaire parts list	64
Valuation Fields	
Valuation Field Roadway 1	
Observer	
Observer 1	
Isolines (L)	65
Tartakas iela	
Planning data	66
Luminaire parts list	67
Valuation Fields	
Valuation Field Roadway 1	
Observer	
Observer 1	
Isolines (L)	68
Vakaru iela	
Planning data	69

Operator
Telephone
Fax
e-Mail

Table of contents

Luminaire parts list	70
Valuation Fields	
Valuation Field Roadway 1	
Observer	
Observer 1	
Isolines (L)	71
Vitebskas iela	
Planning data	72
Luminaire parts list	73
Valuation Fields	
Valuation Field Roadway 1	
Observer	
Observer 1	
Isolines (L)	74
Īsā iela	
Planning data	75
Luminaire parts list	76
Valuation Fields	
Valuation Field Roadway 1	
Observer	
Observer 1	
Isolines (L)	77
Tabores iela	
Planning data	78
Luminaire parts list	79
Valuation Fields	
Valuation Field Roadway 1	
Observer	
Observer 1	
Isolines (L)	80
Observer 2	
Isolines (L)	81
Zemnieku iela	
Planning data	82
Luminaire parts list	83
Valuation Fields	
Valuation Field Roadway 1	
Observer	
Observer 1	
Isolines (L)	84
Observer 2	
Isolines (L)	85
Tiruma iela	
Planning data	86
Luminaire parts list	87
Valuation Fields	
Valuation Field Roadway 1	
Observer	
Observer 1	
Isolines (L)	88
Observer 2	
Isolines (L)	89
Riekstu iela	
Planning data	90

Operator
Telephone
Fax
e-Mail

Table of contents

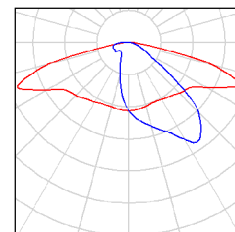
Luminaire parts list	91
Valuation Fields	
Valuation Field Roadway 1	
Observer	
Observer 1	
Isolines (L)	92
Apiņu iela	
Planning data	93
Luminaire parts list	94
Valuation Fields	
Valuation Field Roadway 1	
Observer	
Observer 1	
Isolines (L)	95
Kurpnieku iela	
Planning data	96
Luminaire parts list	97
Valuation Fields	
Valuation Field Roadway 1	
Observer	
Observer 1	
Isolines (L)	98

Operator
Telephone
Fax
e-Mail

Daugavpils-Judovka / Luminaire parts list

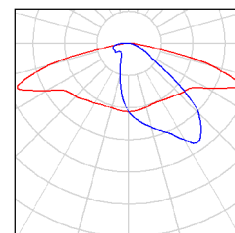
80 Pieces LED 52W
Article No.:
Luminous flux (Luminaire): 5557 lm
Luminous flux (Lamps): 5912 lm
Luminaire Wattage: 52.0 W
Luminaire classification according to CIE: 100
CIE flux code: 32 64 92 100 95
Fitting: 1 x NICHIA_N383 (Correction Factor 1.000).

See our luminaire catalog for an image of the luminaire.



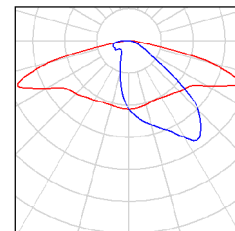
45 Pieces LED 65W
Article No.:
Luminous flux (Luminaire): 6355 lm
Luminous flux (Lamps): 6760 lm
Luminaire Wattage: 65.0 W
Luminaire classification according to CIE: 100
CIE flux code: 32 64 92 100 95
Fitting: 1 x NICHIA_N383 (Correction Factor 1.000).

See our luminaire catalog for an image of the luminaire.



5 Pieces LED 76W
Article No.:
Luminous flux (Luminaire): 8299 lm
Luminous flux (Lamps): 8829 lm
Luminaire Wattage: 76.0 W
Luminaire classification according to CIE: 100
CIE flux code: 32 64 92 100 95
Fitting: 1 x NICHIA_N383 (Correction Factor 1.000).

See our luminaire catalog for an image of the luminaire.

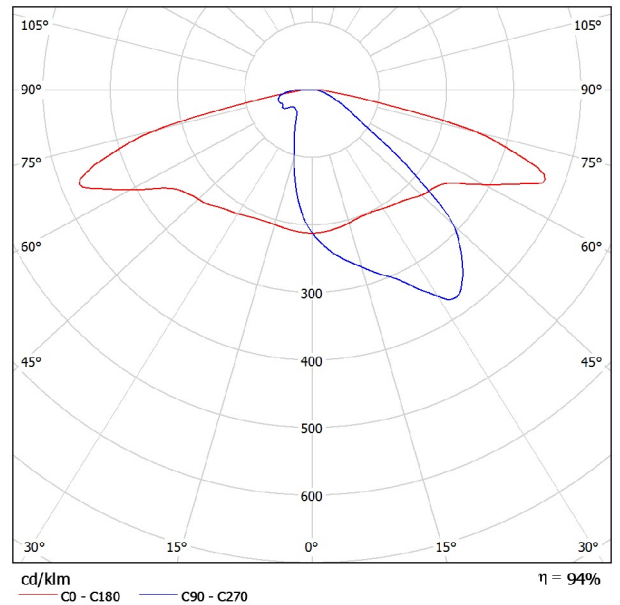


Operator
 Telephone
 Fax
 e-Mail

LED 76W / Luminaire Data Sheet

See our luminaire catalog for an image of the luminaire.

Luminous emittance 1:



Luminaire classification according to CIE: 100
 CIE flux code: 32 64 92 100 95

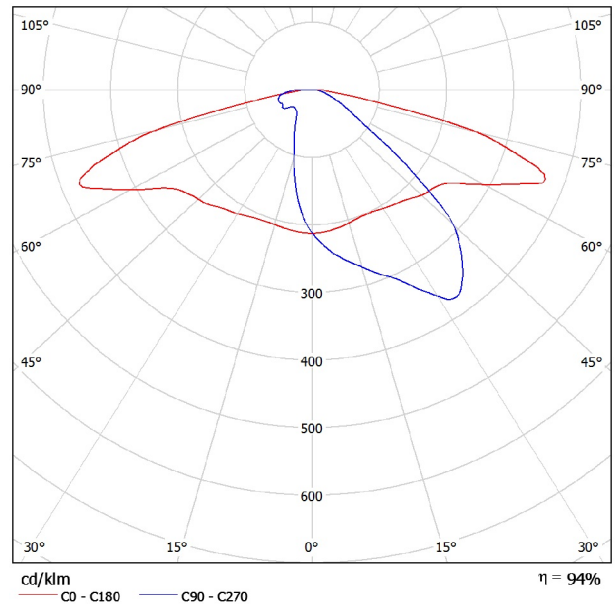
Due to missing symmetry properties, no UGR table can be displayed for this luminaire.

Operator
 Telephone
 Fax
 e-Mail

LED 52W / Luminaire Data Sheet

See our luminaire catalog for an image of the luminaire.

Luminous emittance 1:



Luminaire classification according to CIE: 100
 CIE flux code: 32 64 92 100 95

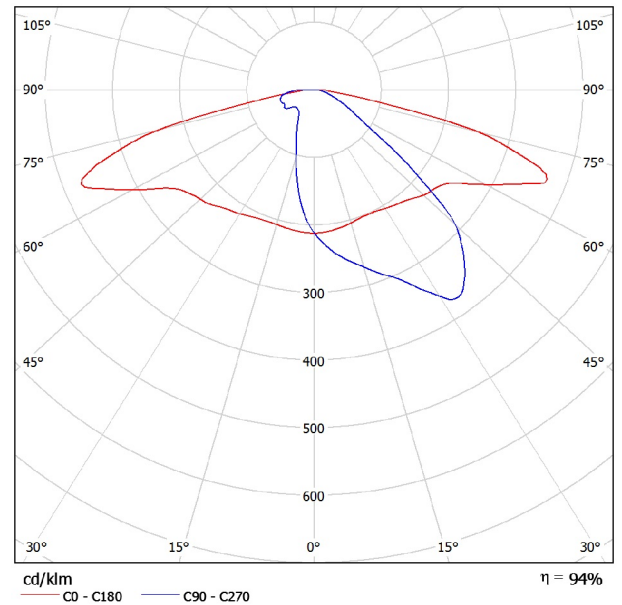
Due to missing symmetry properties, no UGR table can be displayed for this luminaire.

Operator
 Telephone
 Fax
 e-Mail

LED 65W / Luminaire Data Sheet

See our luminaire catalog for an image of the luminaire.

Luminous emittance 1:



Luminaire classification according to CIE: 100
 CIE flux code: 32 64 92 100 95

Due to missing symmetry properties, no UGR table can be displayed for this luminaire.

Operator
 Telephone
 Fax
 e-Mail

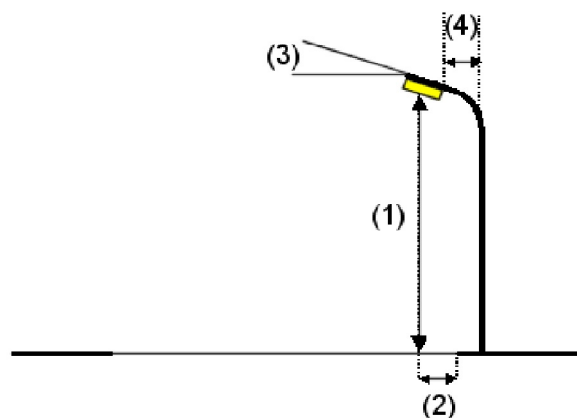
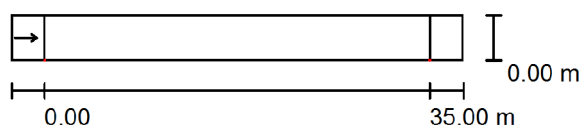
1.maija iela / Planning data

Street Profile

Roadway 1 (Width: 4.000 m, Number of lanes: 1, tarmac: R3, q0: 0.070)

Maintenance factor: 0.67

Luminaire Arrangements



Luminaire:	LED 52W
Luminous flux (Luminaire):	5557 lm
Luminous flux (Lamps):	5912 lm
Luminaire Wattage:	52.0 W
Arrangement:	Single row, bottom
Pole Distance:	35.000 m
Mounting Height (1):	8.000 m
Height:	8.000 m
Overhang (2):	0.000 m
Boom Angle (3):	5.0 °
Boom Length (4):	1.000 m

Maximum luminous intensities

at 70°:	588 cd/klm
at 80°:	105 cd/klm
at 90°:	44 cd/klm

Any direction forming the specified angle from the downward vertical, with the luminaire installed for use.

No luminous intensities above 95°.

Arrangement complies with luminous intensity class G1.

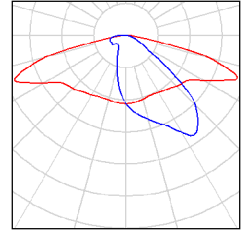
Arrangement complies with glare index class D.3.

Operator
Telephone
Fax
e-Mail

1.maija iela / Luminaire parts list

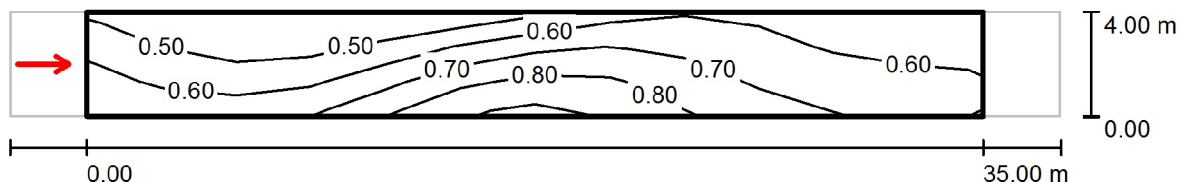
LED 52W
Article No.:
Luminous flux (Luminaire): 5557 lm
Luminous flux (Lamps): 5912 lm
Luminaire Wattage: 52.0 W
Luminaire classification according to CIE: 100
CIE flux code: 32 64 92 100 95
Fitting: 1 x NICHIA_N383 (Correction Factor
1.000).

See our luminaire
catalog for an image of
the luminaire.



Operator
Telephone
Fax
e-Mail

1.maija iela / Valuation Field Roadway 1 / Observer 1 / Isolines (L)



Values in Candela/m², Scale 1 : 294

Grid: 12 x 3 Points
Observer Position: (-60.000 m, 2.000 m, 1.500 m)
tarmac: R3, q0: 0.070

	L_{av} [cd/m ²]	U0	UI	TI [%]
Calculated values:	0.63	0.64	0.63	11
Required values according to class ME5:	≥ 0.50	≥ 0.35	≥ 0.40	≤ 15
Fulfilled/Not fulfilled:	✓	✓	✓	✓

Operator
 Telephone
 Fax
 e-Mail

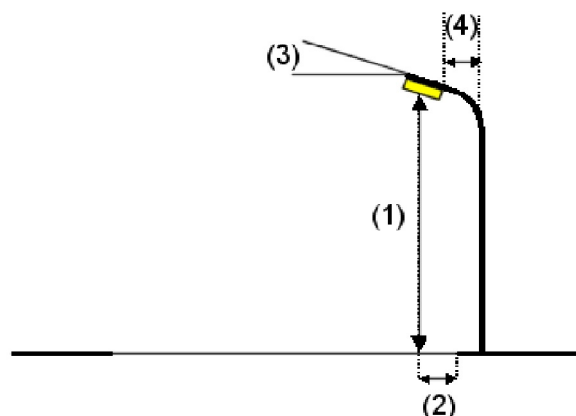
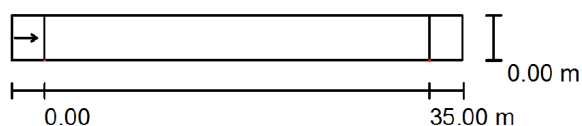
Amatnieku iela / Planning data

Street Profile

Roadway 1 (Width: 4.000 m, Number of lanes: 1, tarmac: R3, q0: 0.070)

Maintenance factor: 0.67

Luminaire Arrangements



Luminaire:	LED 52W
Luminous flux (Luminaire):	5557 lm
Luminous flux (Lamps):	5912 lm
Luminaire Wattage:	52.0 W
Arrangement:	Single row, bottom
Pole Distance:	35.000 m
Mounting Height (1):	8.000 m
Height:	8.000 m
Overhang (2):	0.000 m
Boom Angle (3):	5.0 °
Boom Length (4):	1.000 m

Maximum luminous intensities

at 70°:	644 cd/klm
at 80°:	258 cd/klm
at 90°:	35 cd/klm

Any direction forming the specified angle from the downward vertical, with the luminaire installed for use.

No luminous intensities above 95°.

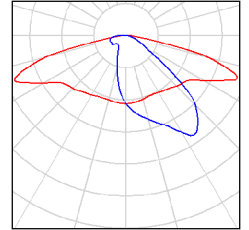
Arrangement complies with glare index class D.0.

Operator
Telephone
Fax
e-Mail

Amatnieku iela / Luminaire parts list

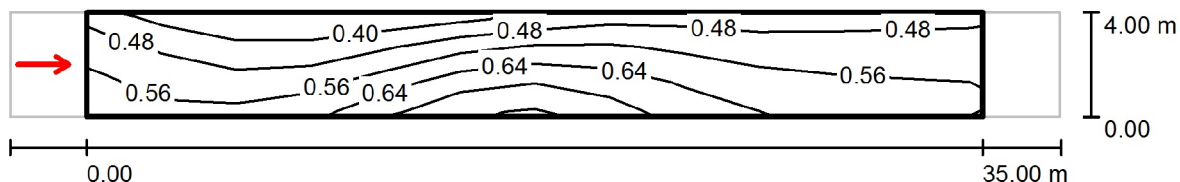
LED 52W
Article No.:
Luminous flux (Luminaire): 5557 lm
Luminous flux (Lamps): 5912 lm
Luminaire Wattage: 52.0 W
Luminaire classification according to CIE: 100
CIE flux code: 32 64 92 100 95
Fitting: 1 x NICHIA_N383 (Correction Factor
1.000).

See our luminaire
catalog for an image of
the luminaire.



Operator
Telephone
Fax
e-Mail

Amatnieku iela / Valuation Field Roadway 1 / Observer 1 / Isolines (L)



Values in Candela/m², Scale 1 : 294

Grid: 12 x 3 Points
Observer Position: (-60.000 m, 2.000 m, 1.500 m)
tarmac: R3, q0: 0.070

	L_{av} [cd/m ²]	U0	UI	TI [%]
Calculated values:	0.55	0.66	0.69	12
Required values according to class ME5:	≥ 0.50	≥ 0.35	≥ 0.40	≤ 15
Fulfilled/Not fulfilled:	✓	✓	✓	✓

Operator
Telephone
Fax
e-Mail

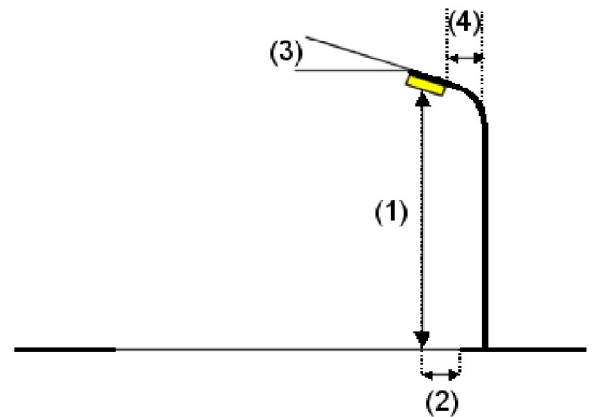
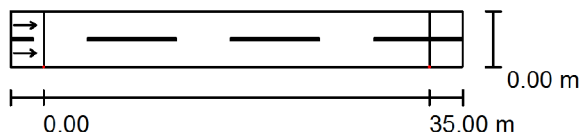
Austrumu ielā / Planning data

Street Profile

Roadway 1 (Width: 5.000 m, Number of lanes: 2, tarmac: R3, q0: 0.070)

Maintenance factor: 0.67

Luminaire Arrangements



Luminaire:	LED 65W
Luminous flux (Luminaire):	6355 lm
Luminous flux (Lamps):	6760 lm
Luminaire Wattage:	65.0 W
Arrangement:	Single row, bottom
Pole Distance:	35.000 m
Mounting Height (1):	8.000 m
Height:	8.000 m
Overhang (2):	0.000 m
Boom Angle (3):	5.0 °
Boom Length (4):	1.000 m

Maximum luminous intensities

at 70°:	644 cd/klm
at 80°:	258 cd/klm
at 90°:	35 cd/klm

Any direction forming the specified angle from the downward vertical, with the luminaire installed for use.

No luminous intensities above 95°.

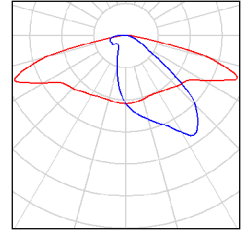
Arrangement complies with glare index class D.0.

Operator
Telephone
Fax
e-Mail

Austrumu ielā / Luminaire parts list

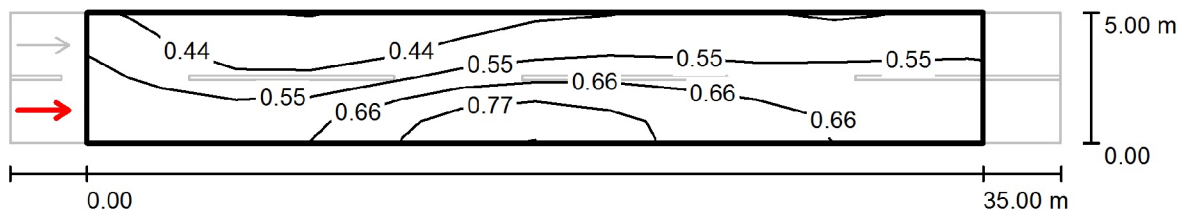
LED 65W
Article No.:
Luminous flux (Luminaire): 6355 lm
Luminous flux (Lamps): 6760 lm
Luminaire Wattage: 65.0 W
Luminaire classification according to CIE: 100
CIE flux code: 32 64 92 100 95
Fitting: 1 x NICHIA_N383 (Correction Factor
1.000).

See our luminaire
catalog for an image of
the luminaire.



Operator
 Telephone
 Fax
 e-Mail

Austrumu ielā / Valuation Field Roadway 1 / Observer 1 / Isolines (L)



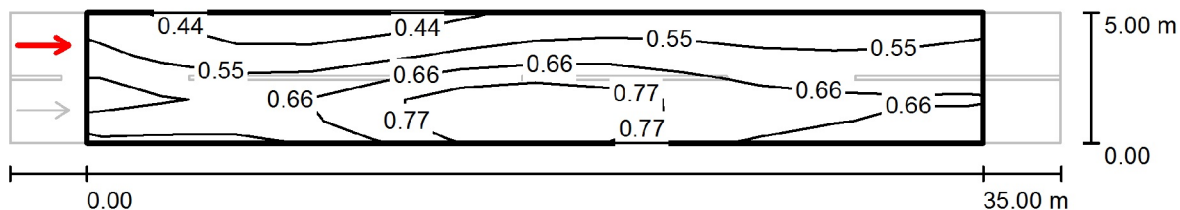
Values in Candela/m², Scale 1 : 294

Grid: 12 x 6 Points
 Observer Position: (-60.000 m, 1.250 m, 1.500 m)
 tarmac: R3, q0: 0.070

	L_{av} [cd/m ²]	U0	UI	TI [%]
Calculated values:	0.57	0.57	0.71	13
Required values according to class ME5:	≥ 0.50	≥ 0.35	≥ 0.40	≤ 15
Fulfilled/Not fulfilled:	✓	✓	✓	✓

Operator
 Telephone
 Fax
 e-Mail

Austrumu ielā / Valuation Field Roadway 1 / Observer 2 / Isolines (L)



Values in Candela/m², Scale 1 : 294

Grid: 12 x 6 Points
 Observer Position: (-60.000 m, 3.750 m, 1.500 m)
 tarmac: R3, q0: 0.070

	L_{av} [cd/m²]	U0	UI	TI [%]
Calculated values:	0.62	0.60	0.74	12
Required values according to class ME5:	≥ 0.50	≥ 0.35	≥ 0.40	≤ 15
Fulfilled/Not fulfilled:	✓	✓	✓	✓

Operator
Telephone
Fax
e-Mail

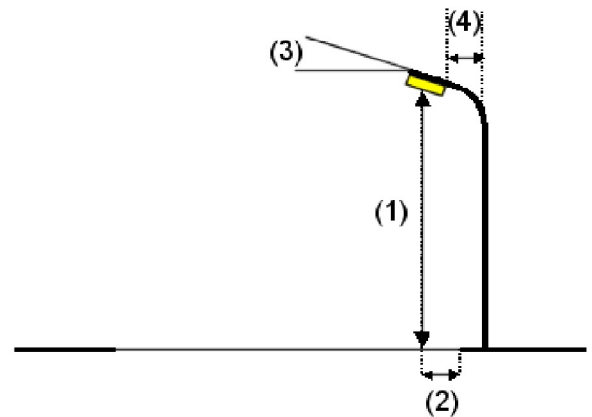
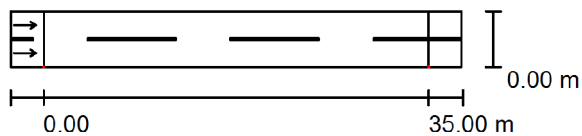
Braslavas iela / Planning data

Street Profile

Roadway 1 (Width: 5.000 m, Number of lanes: 2, tarmac: R3, q0: 0.070)

Maintenance factor: 0.67

Luminaire Arrangements



Luminaire:	LED 65W
Luminous flux (Luminaire):	6355 lm
Luminous flux (Lamps):	6760 lm
Luminaire Wattage:	65.0 W
Arrangement:	Single row, bottom
Pole Distance:	35.000 m
Mounting Height (1):	8.000 m
Height:	8.000 m
Overhang (2):	0.000 m
Boom Angle (3):	5.0 °
Boom Length (4):	1.000 m

Maximum luminous intensities

at 70°:	588 cd/klm
at 80°:	105 cd/klm
at 90°:	44 cd/klm

Any direction forming the specified angle from the downward vertical, with the luminaire installed for use.

No luminous intensities above 95°.

Arrangement complies with luminous intensity class G1.

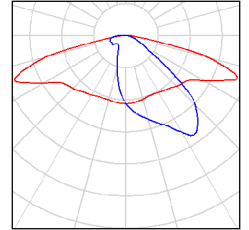
Arrangement complies with glare index class D.3.

Operator
Telephone
Fax
e-Mail

Braslavas iela / Luminaire parts list

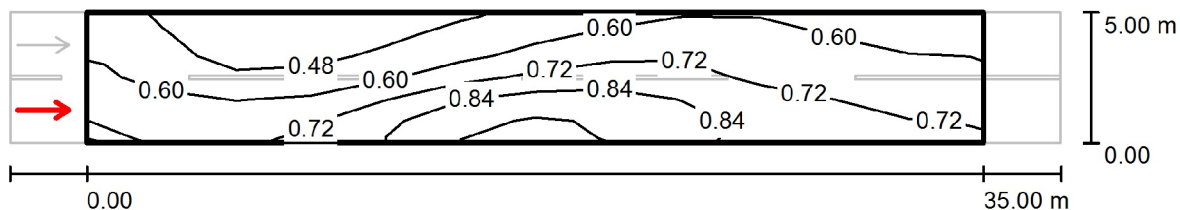
LED 65W
Article No.:
Luminous flux (Luminaire): 6355 lm
Luminous flux (Lamps): 6760 lm
Luminaire Wattage: 65.0 W
Luminaire classification according to CIE: 100
CIE flux code: 32 64 92 100 95
Fitting: 1 x NICHIA_N383 (Correction Factor
1.000).

See our luminaire
catalog for an image of
the luminaire.



Operator
 Telephone
 Fax
 e-Mail

Braslavas iela / Valuation Field Roadway 1 / Observer 1 / Isolines (L)



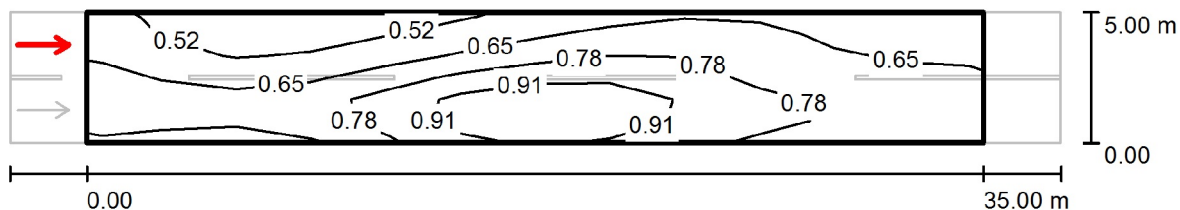
Values in Candela/m², Scale 1 : 294

Grid: 12 x 6 Points
 Observer Position: (-60.000 m, 1.250 m, 1.500 m)
 tarmac: R3, q0: 0.070

	L_{av} [cd/m ²]	U0	UI	TI [%]
Calculated values:	0.66	0.59	0.67	12
Required values according to class ME5:	≥ 0.50	≥ 0.35	≥ 0.40	≤ 15
Fulfilled/Not fulfilled:	✓	✓	✓	✓

Operator
 Telephone
 Fax
 e-Mail

Braslavas iela / Valuation Field Roadway 1 / Observer 2 / Isolines (L)



Values in Candela/m², Scale 1 : 294

Grid: 12 x 6 Points
 Observer Position: (-60.000 m, 3.750 m, 1.500 m)
 tarmac: R3, q0: 0.070

	L_{av} [cd/m ²]	U0	UI	TI [%]
Calculated values:	0.71	0.60	0.63	11
Required values according to class ME5:	≥ 0.50	≥ 0.35	≥ 0.40	≤ 15
Fulfilled/Not fulfilled:	✓	✓	✓	✓

Operator
 Telephone
 Fax
 e-Mail

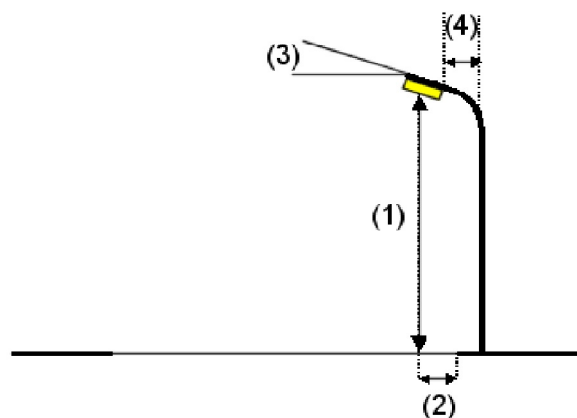
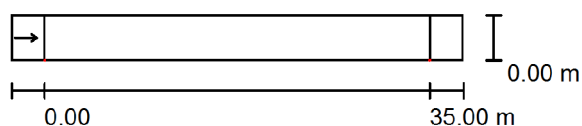
Demenes iela / Planning data

Street Profile

Roadway 1 (Width: 4.000 m, Number of lanes: 1, tarmac: R3, q0: 0.070)

Maintenance factor: 0.67

Luminaire Arrangements



Luminaire:	LED 52W
Luminous flux (Luminaire):	5557 lm
Luminous flux (Lamps):	5912 lm
Luminaire Wattage:	52.0 W
Arrangement:	Single row, bottom
Pole Distance:	35.000 m
Mounting Height (1):	8.000 m
Height:	8.000 m
Overhang (2):	0.000 m
Boom Angle (3):	5.0 °
Boom Length (4):	1.000 m

Maximum luminous intensities

at 70°:	588 cd/klm
at 80°:	105 cd/klm
at 90°:	44 cd/klm

Any direction forming the specified angle from the downward vertical, with the luminaire installed for use.

No luminous intensities above 95°.

Arrangement complies with luminous intensity class G1.

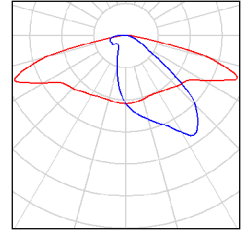
Arrangement complies with glare index class D.3.

Operator
Telephone
Fax
e-Mail

Demenes iela / Luminaire parts list

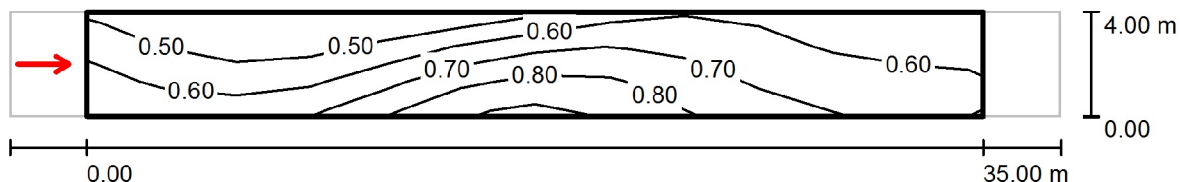
LED 52W
Article No.:
Luminous flux (Luminaire): 5557 lm
Luminous flux (Lamps): 5912 lm
Luminaire Wattage: 52.0 W
Luminaire classification according to CIE: 100
CIE flux code: 32 64 92 100 95
Fitting: 1 x NICHIA_N383 (Correction Factor
1.000).

See our luminaire
catalog for an image of
the luminaire.



Operator
Telephone
Fax
e-Mail

Demenes iela / Valuation Field Roadway 1 / Observer 1 / Isolines (L)



Values in Candela/m², Scale 1 : 294

Grid: 12 x 3 Points
Observer Position: (-60.000 m, 2.000 m, 1.500 m)
tarmac: R3, q0: 0.070

	L_{av} [cd/m²]	U0	UI	TI [%]
Calculated values:	0.63	0.64	0.63	11
Required values according to class ME5:	≥ 0.50	≥ 0.35	≥ 0.40	≤ 15
Fulfilled/Not fulfilled:	✓	✓	✓	✓

Operator
Telephone
Fax
e-Mail

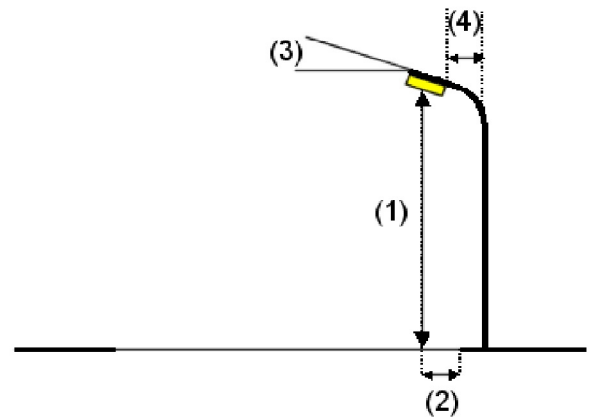
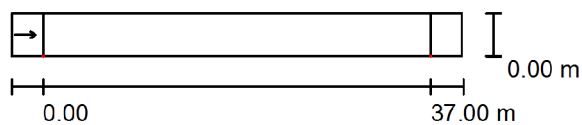
Elnes iela / Planning data

Street Profile

Roadway 1 (Width: 4.000 m, Number of lanes: 1, tarmac: R3, q0: 0.070)

Maintenance factor: 0.67

Luminaire Arrangements



Luminaire:	LED 52W
Luminous flux (Luminaire):	5557 lm
Luminous flux (Lamps):	5912 lm
Luminaire Wattage:	52.0 W
Arrangement:	Single row, bottom
Pole Distance:	37.000 m
Mounting Height (1):	8.000 m
Height:	8.000 m
Overhang (2):	0.000 m
Boom Angle (3):	5.0 °
Boom Length (4):	1.000 m

Maximum luminous intensities

at 70°:	588 cd/klm
at 80°:	105 cd/klm
at 90°:	44 cd/klm

Any direction forming the specified angle from the downward vertical, with the luminaire installed for use.

No luminous intensities above 95°.

Arrangement complies with luminous intensity class G1.

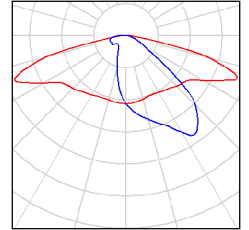
Arrangement complies with glare index class D.3.

Operator
Telephone
Fax
e-Mail

Elernes iela / Luminaire parts list

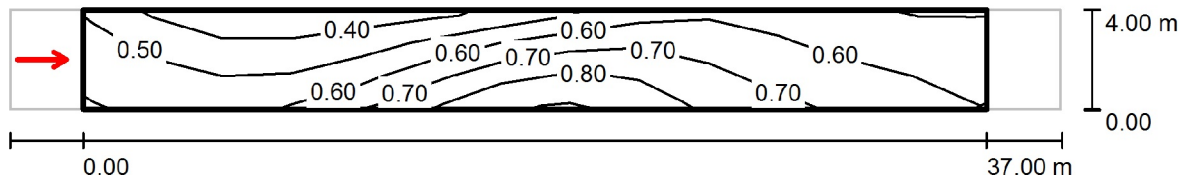
LED 52W
Article No.:
Luminous flux (Luminaire): 5557 lm
Luminous flux (Lamps): 5912 lm
Luminaire Wattage: 52.0 W
Luminaire classification according to CIE: 100
CIE flux code: 32 64 92 100 95
Fitting: 1 x NICHIA_N383 (Correction Factor
1.000).

See our luminaire
catalog for an image of
the luminaire.



Operator
Telephone
Fax
e-Mail

Elnes iela / Valuation Field Roadway 1 / Observer 1 / Isolines (L)



Values in Candela/m², Scale 1 : 308

Grid: 13 x 3 Points
Observer Position: (-60.000 m, 2.000 m, 1.500 m)
tarmac: R3, q0: 0.070

	L_{av} [cd/m ²]	U0	UI	TI [%]
Calculated values:	0.59	0.61	0.57	12
Required values according to class ME5:	≥ 0.50	≥ 0.35	≥ 0.40	≤ 15
Fulfilled/Not fulfilled:	✓	✓	✓	✓

Operator
 Telephone
 Fax
 e-Mail

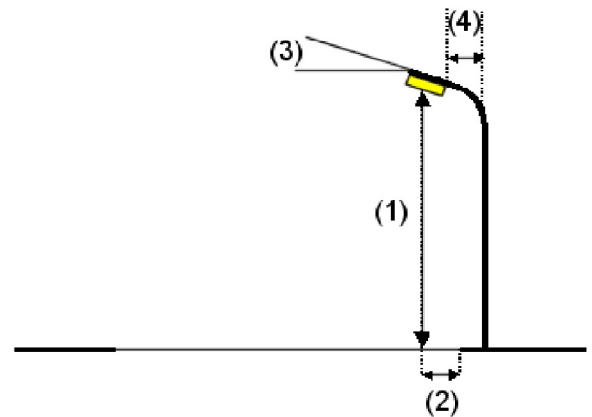
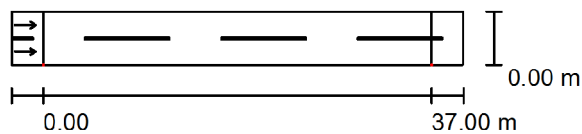
Kaplavas iela / Planning data

Street Profile

Roadway 1 (Width: 5.000 m, Number of lanes: 2, tarmac: R3, q0: 0.070)

Maintenance factor: 0.67

Luminaire Arrangements



Luminaire:	LED 65W
Luminous flux (Luminaire):	6355 lm
Luminous flux (Lamps):	6760 lm
Luminaire Wattage:	65.0 W
Arrangement:	Single row, bottom
Pole Distance:	37.000 m
Mounting Height (1):	8.000 m
Height:	8.000 m
Overhang (2):	0.000 m
Boom Angle (3):	5.0 °
Boom Length (4):	1.000 m

Maximum luminous intensities

at 70°:	588 cd/klm
at 80°:	105 cd/klm
at 90°:	44 cd/klm

Any direction forming the specified angle from the downward vertical, with the luminaire installed for use.

No luminous intensities above 95°.

Arrangement complies with luminous intensity class G1.

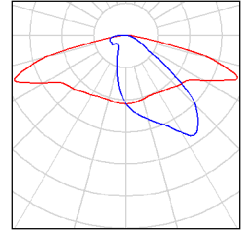
Arrangement complies with glare index class D.3.

Operator
Telephone
Fax
e-Mail

Kaplavas iela / Luminaire parts list

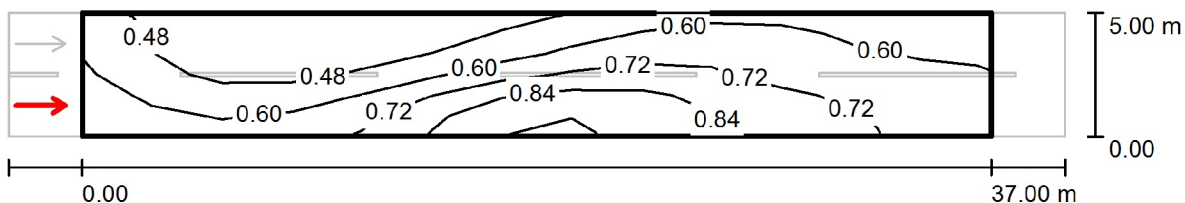
LED 65W
Article No.:
Luminous flux (Luminaire): 6355 lm
Luminous flux (Lamps): 6760 lm
Luminaire Wattage: 65.0 W
Luminaire classification according to CIE: 100
CIE flux code: 32 64 92 100 95
Fitting: 1 x NICHIA_N383 (Correction Factor
1.000).

See our luminaire
catalog for an image of
the luminaire.



Operator
Telephone
Fax
e-Mail

Kaplavas iela / Valuation Field Roadway 1 / Observer 1 / Isolines (L)



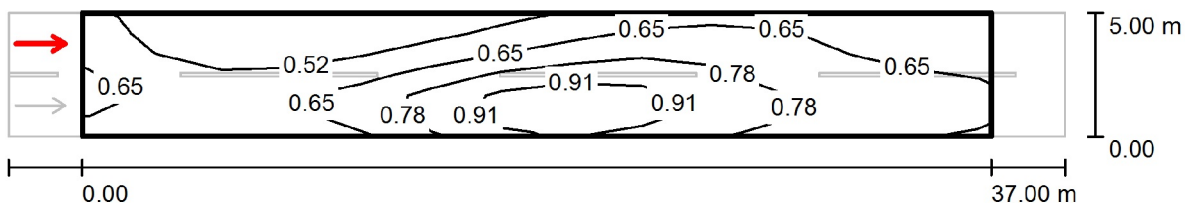
Values in Candela/m², Scale 1 : 308

Grid: 13 x 6 Points
Observer Position: (-60.000 m, 1.250 m, 1.500 m)
tarmac: R3, q0: 0.070

	L_{av} [cd/m ²]	U0	UI	TI [%]
Calculated values:	0.63	0.58	0.60	13
Required values according to class ME5:	≥ 0.50	≥ 0.35	≥ 0.40	≤ 15
Fulfilled/Not fulfilled:	✓	✓	✓	✓

Operator
 Telephone
 Fax
 e-Mail

Kaplavas iela / Valuation Field Roadway 1 / Observer 2 / Isolines (L)



Values in Candela/m², Scale 1 : 308

Grid: 13 x 6 Points
 Observer Position: (-60.000 m, 3.750 m, 1.500 m)
 tarmac: R3, q0: 0.070

	L_{av} [cd/m ²]	U0	UI	TI [%]
Calculated values:	0.67	0.59	0.57	11
Required values according to class ME5:	≥ 0.50	≥ 0.35	≥ 0.40	≤ 15
Fulfilled/Not fulfilled:	✓	✓	✓	✓

Operator
Telephone
Fax
e-Mail

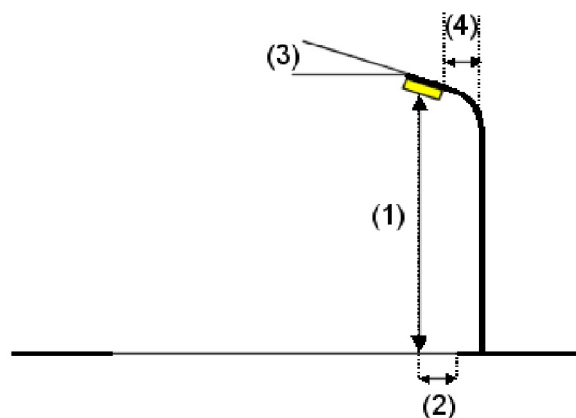
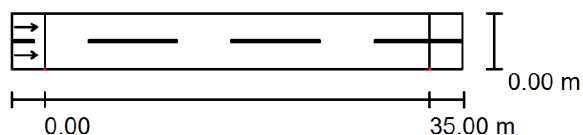
Kooperācijas iela / Planning data

Street Profile

Roadway 1 (Width: 5.000 m, Number of lanes: 2, tarmac: R3, q0: 0.070)

Maintenance factor: 0.67

Luminaire Arrangements



Luminaire:	LED 65W
Luminous flux (Luminaire):	6355 lm
Luminous flux (Lamps):	6760 lm
Luminaire Wattage:	65.0 W
Arrangement:	Single row, bottom
Pole Distance:	35.000 m
Mounting Height (1):	8.000 m
Height:	8.000 m
Overhang (2):	0.000 m
Boom Angle (3):	5.0 °
Boom Length (4):	1.000 m

Maximum luminous intensities

at 70°:	588 cd/klm
at 80°:	105 cd/klm
at 90°:	44 cd/klm

Any direction forming the specified angle from the downward vertical, with the luminaire installed for use.

No luminous intensities above 95°.

Arrangement complies with luminous intensity class G1.

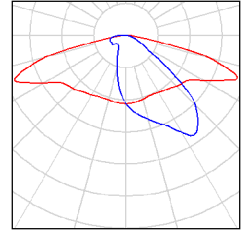
Arrangement complies with glare index class D.3.

Operator
Telephone
Fax
e-Mail

Kooperācijas iela / Luminaire parts list

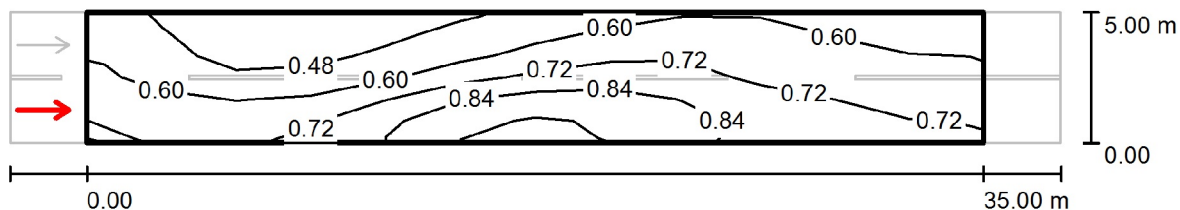
LED 65W
Article No.:
Luminous flux (Luminaire): 6355 lm
Luminous flux (Lamps): 6760 lm
Luminaire Wattage: 65.0 W
Luminaire classification according to CIE: 100
CIE flux code: 32 64 92 100 95
Fitting: 1 x NICHIA_N383 (Correction Factor
1.000).

See our luminaire
catalog for an image of
the luminaire.



Operator
 Telephone
 Fax
 e-Mail

Kooperācijas iela / Valuation Field Roadway 1 / Observer 1 / Isolines (L)



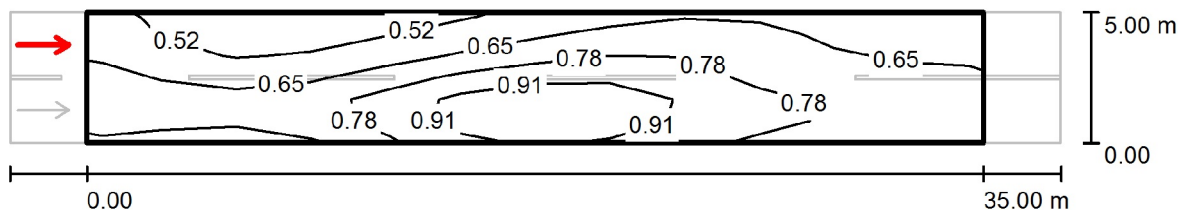
Values in Candela/m², Scale 1 : 294

Grid: 12 x 6 Points
 Observer Position: (-60.000 m, 1.250 m, 1.500 m)
 tarmac: R3, q0: 0.070

	L_{av} [cd/m ²]	U0	UI	TI [%]
Calculated values:	0.66	0.59	0.67	12
Required values according to class ME5:	≥ 0.50	≥ 0.35	≥ 0.40	≤ 15
Fulfilled/Not fulfilled:	✓	✓	✓	✓

Operator
 Telephone
 Fax
 e-Mail

Kooperācijas iela / Valuation Field Roadway 1 / Observer 2 / Isolines (L)



Values in Candela/m², Scale 1 : 294

Grid: 12 x 6 Points
 Observer Position: (-60.000 m, 3.750 m, 1.500 m)
 tarmac: R3, q0: 0.070

	L_{av} [cd/m ²]	U0	UI	TI [%]
Calculated values:	0.71	0.60	0.63	11
Required values according to class ME5:	≥ 0.50	≥ 0.35	≥ 0.40	≤ 15
Fulfilled/Not fulfilled:	✓	✓	✓	✓

Operator
 Telephone
 Fax
 e-Mail

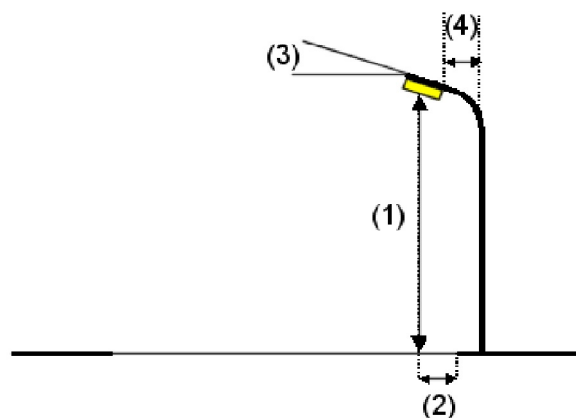
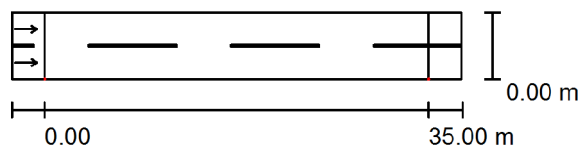
Krāslavas iela / Planning data

Street Profile

Roadway 1 (Width: 6.000 m, Number of lanes: 2, tarmac: R3, q0: 0.070)

Maintenance factor: 0.67

Luminaire Arrangements



Luminaire:	LED 65W
Luminous flux (Luminaire):	6355 lm
Luminous flux (Lamps):	6760 lm
Luminaire Wattage:	65.0 W
Arrangement:	Single row, bottom
Pole Distance:	35.000 m
Mounting Height (1):	8.000 m
Height:	8.000 m
Overhang (2):	0.000 m
Boom Angle (3):	5.0 °
Boom Length (4):	1.000 m

Maximum luminous intensities

at 70°:	588 cd/klm
at 80°:	105 cd/klm
at 90°:	44 cd/klm

Any direction forming the specified angle from the downward vertical, with the luminaire installed for use.

No luminous intensities above 95°.

Arrangement complies with luminous intensity class G1.

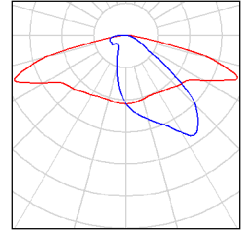
Arrangement complies with glare index class D.3.

Operator
Telephone
Fax
e-Mail

Krāslavas iela / Luminaire parts list

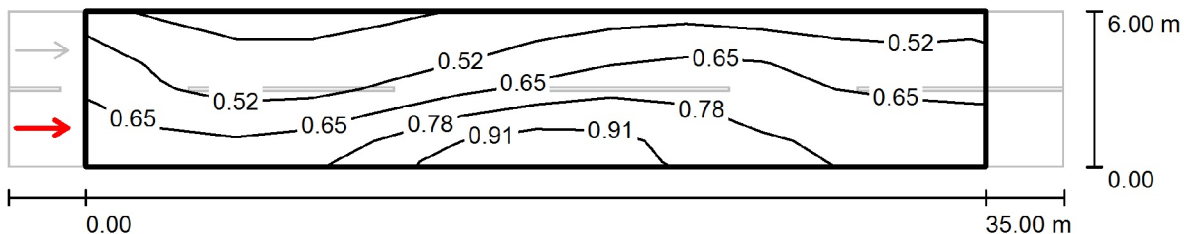
LED 65W
Article No.:
Luminous flux (Luminaire): 6355 lm
Luminous flux (Lamps): 6760 lm
Luminaire Wattage: 65.0 W
Luminaire classification according to CIE: 100
CIE flux code: 32 64 92 100 95
Fitting: 1 x NICHIA_N383 (Correction Factor
1.000).

See our luminaire
catalog for an image of
the luminaire.



Operator
 Telephone
 Fax
 e-Mail

Krāslavas iela / Valuation Field Roadway 1 / Observer 1 / Isolines (L)



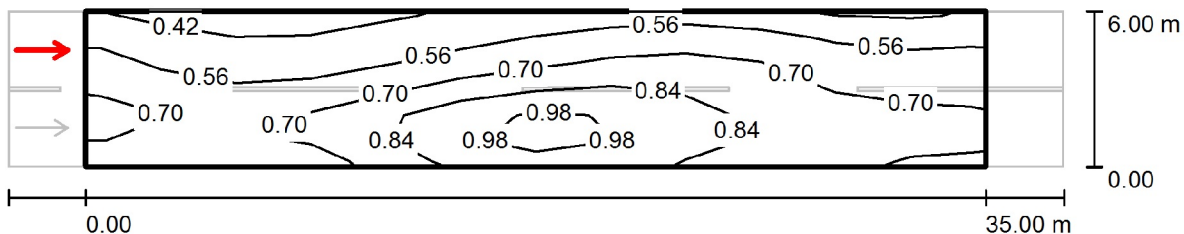
Values in Candela/m², Scale 1 : 294

Grid: 12 x 6 Points
 Observer Position: (-60.000 m, 1.500 m, 1.500 m)
 tarmac: R3, q0: 0.070

	L_{av} [cd/m ²]	U0	UI	TI [%]
Calculated values:	0.63	0.55	0.67	13
Required values according to class ME5:	≥ 0.50	≥ 0.35	≥ 0.40	≤ 15
Fulfilled/Not fulfilled:	✓	✓	✓	✓

Operator
Telephone
Fax
e-Mail

Krāslavas iela / Valuation Field Roadway 1 / Observer 2 / Isolines (L)



Values in Candela/m², Scale 1 : 294

Grid: 12 x 6 Points
Observer Position: (-60.000 m, 4.500 m, 1.500 m)
tarmac: R3, q0: 0.070

	L_{av} [cd/m²]	U0	UI	TI [%]
Calculated values:	0.68	0.54	0.63	10
Required values according to class ME5:	≥ 0.50	≥ 0.35	≥ 0.40	≤ 15
Fulfilled/Not fulfilled:	✓	✓	✓	✓

Operator
Telephone
Fax
e-Mail

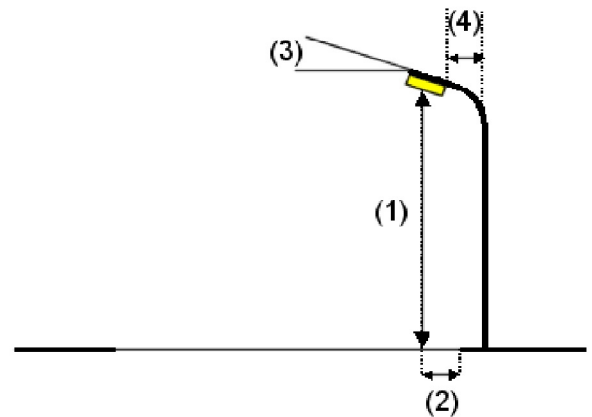
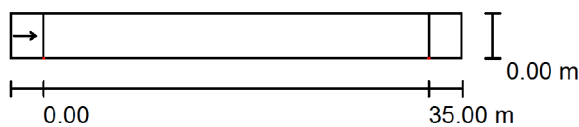
Krinīcas iela / Planning data

Street Profile

Roadway 1 (Width: 4.000 m, Number of lanes: 1, tarmac: R3, q0: 0.070)

Maintenance factor: 0.67

Luminaire Arrangements



Luminaire:	LED 52W
Luminous flux (Luminaire):	5557 lm
Luminous flux (Lamps):	5912 lm
Luminaire Wattage:	52.0 W
Arrangement:	Single row, bottom
Pole Distance:	35.000 m
Mounting Height (1):	8.000 m
Height:	8.000 m
Overhang (2):	0.000 m
Boom Angle (3):	5.0 °
Boom Length (4):	1.000 m

Maximum luminous intensities

at 70°:	588 cd/klm
at 80°:	105 cd/klm
at 90°:	44 cd/klm

Any direction forming the specified angle from the downward vertical, with the luminaire installed for use.

No luminous intensities above 95°.

Arrangement complies with luminous intensity class G1.

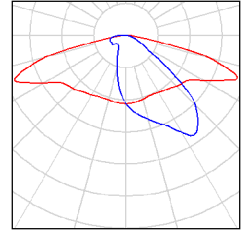
Arrangement complies with glare index class D.3.

Operator
Telephone
Fax
e-Mail

Krinīcas iela / Luminaire parts list

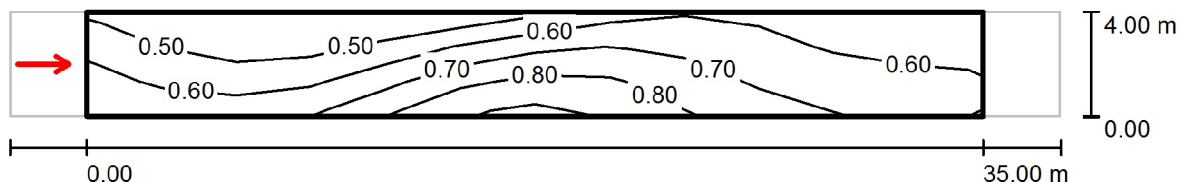
LED 52W
Article No.:
Luminous flux (Luminaire): 5557 lm
Luminous flux (Lamps): 5912 lm
Luminaire Wattage: 52.0 W
Luminaire classification according to CIE: 100
CIE flux code: 32 64 92 100 95
Fitting: 1 x NICHIA_N383 (Correction Factor
1.000).

See our luminaire
catalog for an image of
the luminaire.



Operator
Telephone
Fax
e-Mail

Krinīcas iela / Valuation Field Roadway 1 / Observer 1 / Isolines (L)



Values in Candela/m², Scale 1 : 294

Grid: 12 x 3 Points
Observer Position: (-60.000 m, 2.000 m, 1.500 m)
tarmac: R3, q0: 0.070

	L_{av} [cd/m ²]	U0	UI	TI [%]
Calculated values:	0.63	0.64	0.63	11
Required values according to class ME5:	≥ 0.50	≥ 0.35	≥ 0.40	≤ 15
Fulfilled/Not fulfilled:	✓	✓	✓	✓

Operator
 Telephone
 Fax
 e-Mail

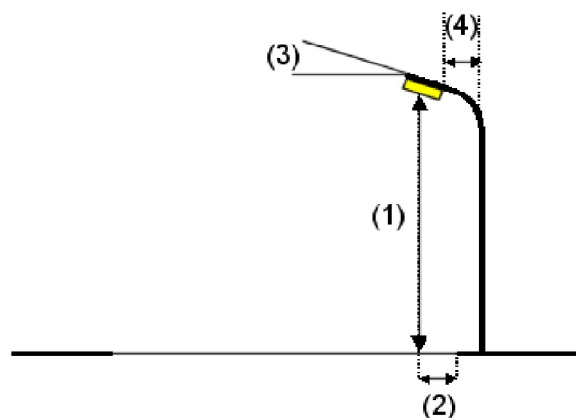
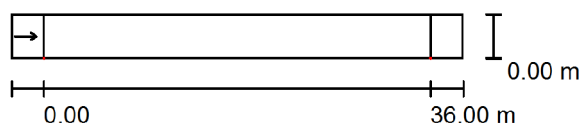
Lejas iela / Planning data

Street Profile

Roadway 1 (Width: 4.000 m, Number of lanes: 1, tarmac: R3, q0: 0.070)

Maintenance factor: 0.67

Luminaire Arrangements



Luminaire:	LED 52W
Luminous flux (Luminaire):	5557 lm
Luminous flux (Lamps):	5912 lm
Luminaire Wattage:	52.0 W
Arrangement:	Single row, bottom
Pole Distance:	36.000 m
Mounting Height (1):	8.000 m
Height:	8.000 m
Overhang (2):	0.000 m
Boom Angle (3):	5.0 °
Boom Length (4):	1.000 m

Maximum luminous intensities

at 70°:	588 cd/klm
at 80°:	105 cd/klm
at 90°:	44 cd/klm

Any direction forming the specified angle from the downward vertical, with the luminaire installed for use.

No luminous intensities above 95°.

Arrangement complies with luminous intensity class G1.

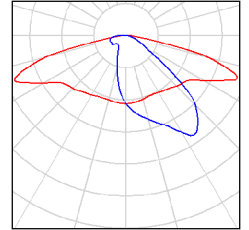
Arrangement complies with glare index class D.3.

Operator
Telephone
Fax
e-Mail

Lejas iela / Luminaire parts list

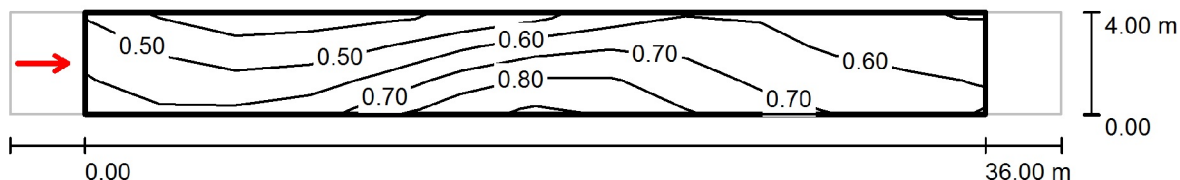
LED 52W
Article No.:
Luminous flux (Luminaire): 5557 lm
Luminous flux (Lamps): 5912 lm
Luminaire Wattage: 52.0 W
Luminaire classification according to CIE: 100
CIE flux code: 32 64 92 100 95
Fitting: 1 x NICHIA_N383 (Correction Factor
1.000).

See our luminaire
catalog for an image of
the luminaire.



Operator
 Telephone
 Fax
 e-Mail

Lejas iela / Valuation Field Roadway 1 / Observer 1 / Isolines (L)



Values in Candela/m², Scale 1 : 301

Grid: 12 x 3 Points
 Observer Position: (-60.000 m, 2.000 m, 1.500 m)
 tarmac: R3, q0: 0.070

	L_{av} [cd/m ²]	U0	UI	TI [%]
Calculated values:	0.61	0.63	0.60	11
Required values according to class ME5:	≥ 0.50	≥ 0.35	≥ 0.40	≤ 15
Fulfilled/Not fulfilled:	✓	✓	✓	✓

Operator
Telephone
Fax
e-Mail

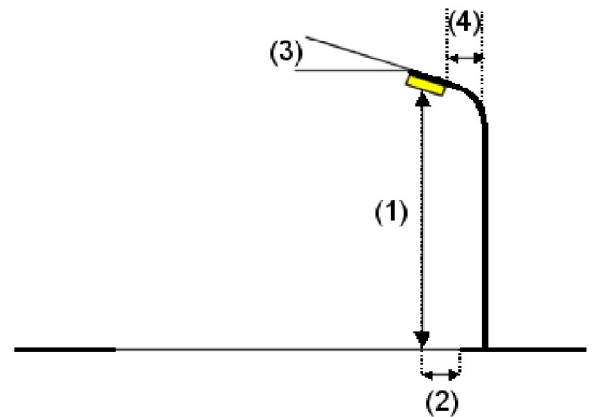
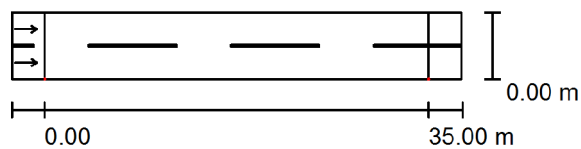
Lielā iela / Planning data

Street Profile

Roadway 1 (Width: 6.000 m, Number of lanes: 2, tarmac: R3, q0: 0.070)

Maintenance factor: 0.67

Luminaire Arrangements



Luminaire:	LED 76W
Luminous flux (Luminaire):	8299 lm
Luminous flux (Lamps):	8829 lm
Luminaire Wattage:	76.0 W
Arrangement:	Single row, bottom
Pole Distance:	35.000 m
Mounting Height (1):	8.000 m
Height:	8.000 m
Overhang (2):	0.000 m
Boom Angle (3):	5.0 °
Boom Length (4):	1.000 m

Maximum luminous intensities

at 70°:	588 cd/klm
at 80°:	105 cd/klm
at 90°:	44 cd/klm

Any direction forming the specified angle from the downward vertical, with the luminaire installed for use.

No luminous intensities above 95°.

Arrangement complies with luminous intensity class G1.

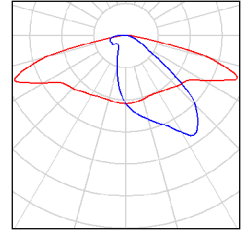
Arrangement complies with glare index class D.3.

Operator
Telephone
Fax
e-Mail

Lielā iela / Luminaire parts list

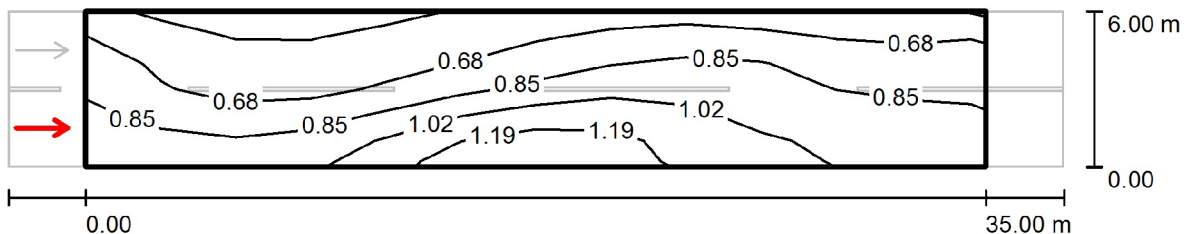
LED 76W
Article No.:
Luminous flux (Luminaire): 8299 lm
Luminous flux (Lamps): 8829 lm
Luminaire Wattage: 76.0 W
Luminaire classification according to CIE: 100
CIE flux code: 32 64 92 100 95
Fitting: 1 x NICHIA_N383 (Correction Factor
1.000).

See our luminaire
catalog for an image of
the luminaire.



Operator
 Telephone
 Fax
 e-Mail

Lielā iela / Valuation Field Roadway 1 / Observer 1 / Isolines (L)



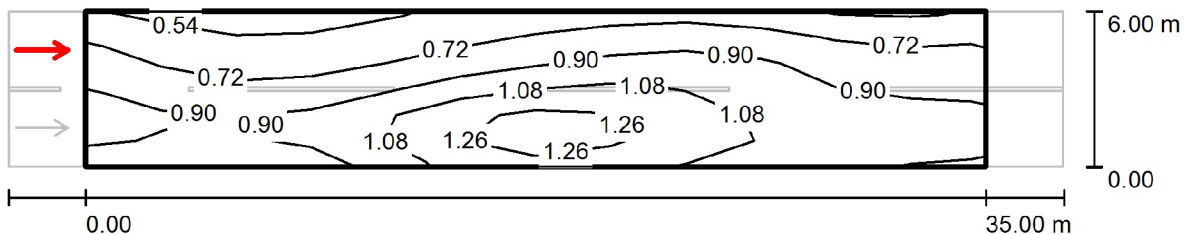
Values in Candela/m², Scale 1 : 294

Grid: 12 x 6 Points
 Observer Position: (-60.000 m, 1.500 m, 1.500 m)
 tarmac: R3, q0: 0.070

	L_{av} [cd/m ²]	U0	UI	TI [%]
Calculated values:	0.82	0.55	0.67	14
Required values according to class ME4b:	≥ 0.75	≥ 0.40	≥ 0.50	≤ 15
Fulfilled/Not fulfilled:	✓	✓	✓	✓

Operator
Telephone
Fax
e-Mail

Lielā iela / Valuation Field Roadway 1 / Observer 2 / Isolines (L)



Values in Candela/m², Scale 1 : 294

Grid: 12 x 6 Points
Observer Position: (-60.000 m, 4.500 m, 1.500 m)
tarmac: R3, q0: 0.070

	L_{av} [cd/m ²]	U0	UI	TI [%]
Calculated values:	0.89	0.54	0.63	11
Required values according to class ME4b:	≥ 0.75	≥ 0.40	≥ 0.50	≤ 15
Fulfilled/Not fulfilled:	✓	✓	✓	✓

Operator
 Telephone
 Fax
 e-Mail

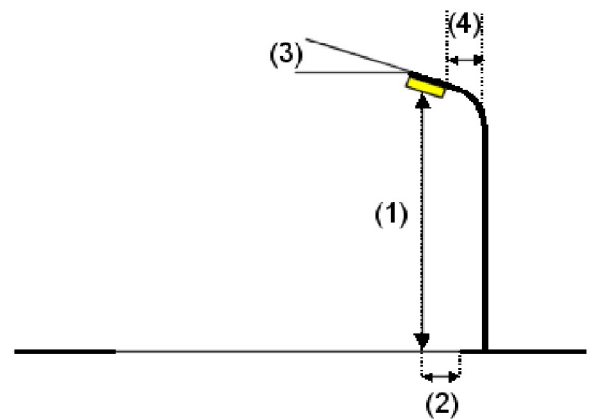
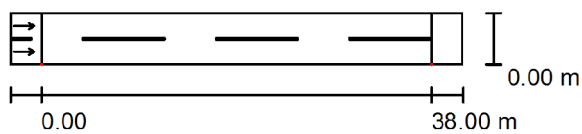
Neļķu iela / Planning data

Street Profile

Roadway 1 (Width: 5.000 m, Number of lanes: 2, tarmac: R3, q0: 0.070)

Maintenance factor: 0.67

Luminaire Arrangements



Luminaire:	LED 65W
Luminous flux (Luminaire):	6355 lm
Luminous flux (Lamps):	6760 lm
Luminaire Wattage:	65.0 W
Arrangement:	Single row, bottom
Pole Distance:	38.000 m
Mounting Height (1):	8.000 m
Height:	8.000 m
Overhang (2):	0.000 m
Boom Angle (3):	5.0 °
Boom Length (4):	1.000 m

Maximum luminous intensities

at 70°:	588 cd/klm
at 80°:	105 cd/klm
at 90°:	44 cd/klm

Any direction forming the specified angle from the downward vertical, with the luminaire installed for use.

No luminous intensities above 95°.

Arrangement complies with luminous intensity class G1.

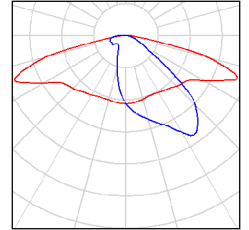
Arrangement complies with glare index class D.3.

Operator
Telephone
Fax
e-Mail

Neļķu iela / Luminaire parts list

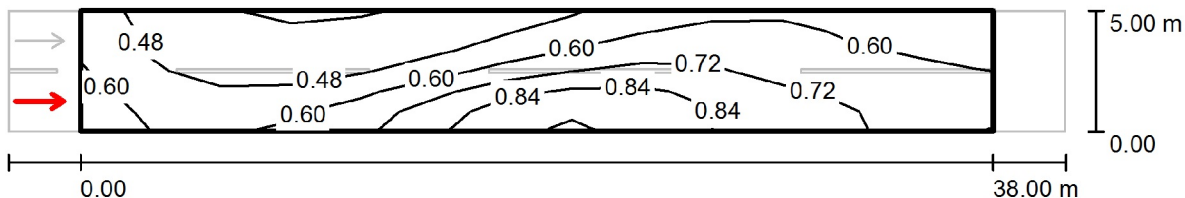
LED 65W
Article No.:
Luminous flux (Luminaire): 6355 lm
Luminous flux (Lamps): 6760 lm
Luminaire Wattage: 65.0 W
Luminaire classification according to CIE: 100
CIE flux code: 32 64 92 100 95
Fitting: 1 x NICHIA_N383 (Correction Factor
1.000).

See our luminaire
catalog for an image of
the luminaire.



Operator
Telephone
Fax
e-Mail

Neļķu iela / Valuation Field Roadway 1 / Observer 1 / Isolines (L)



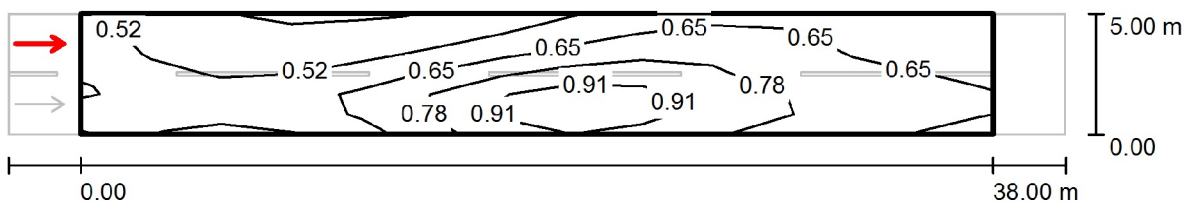
Values in Candela/m², Scale 1 : 315

Grid: 13 x 6 Points
Observer Position: (-60.000 m, 1.250 m, 1.500 m)
tarmac: R3, q0: 0.070

	L_{av} [cd/m ²]	U0	UI	TI [%]
Calculated values:	0.61	0.58	0.57	13
Required values according to class ME5:	≥ 0.50	≥ 0.35	≥ 0.40	≤ 15
Fulfilled/Not fulfilled:	✓	✓	✓	✓

Operator
Telephone
Fax
e-Mail

Neļķu iela / Valuation Field Roadway 1 / Observer 2 / Isolines (L)



Values in Candela/m², Scale 1 : 315

Grid: 13 x 6 Points
Observer Position: (-60.000 m, 3.750 m, 1.500 m)
tarmac: R3, q0: 0.070

	L_{av} [cd/m ²]	U0	UI	TI [%]
Calculated values:	0.65	0.58	0.55	12
Required values according to class ME5:	≥ 0.50	≥ 0.35	≥ 0.40	≤ 15
Fulfilled/Not fulfilled:	✓	✓	✓	✓

Operator
 Telephone
 Fax
 e-Mail

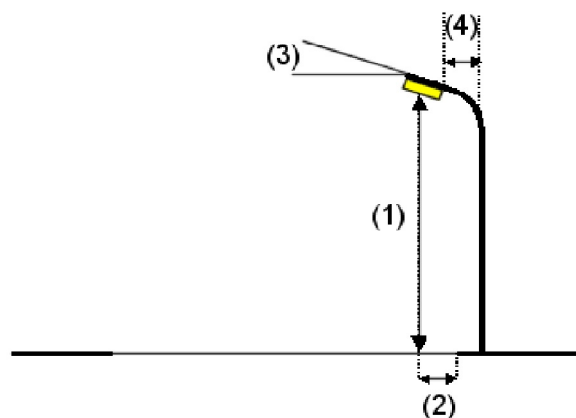
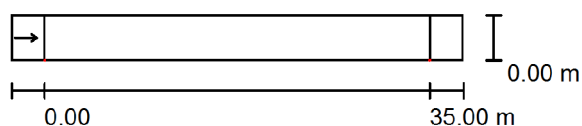
Odesas iela / Planning data

Street Profile

Roadway 1 (Width: 4.000 m, Number of lanes: 1, tarmac: R3, q0: 0.070)

Maintenance factor: 0.67

Luminaire Arrangements



Luminaire:	LED 52W
Luminous flux (Luminaire):	5557 lm
Luminous flux (Lamps):	5912 lm
Luminaire Wattage:	52.0 W
Arrangement:	Single row, bottom
Pole Distance:	35.000 m
Mounting Height (1):	8.000 m
Height:	8.000 m
Overhang (2):	0.000 m
Boom Angle (3):	5.0 °
Boom Length (4):	1.000 m

Maximum luminous intensities

at 70°:	588 cd/klm
at 80°:	105 cd/klm
at 90°:	44 cd/klm

Any direction forming the specified angle from the downward vertical, with the luminaire installed for use.

No luminous intensities above 95°.

Arrangement complies with luminous intensity class G1.

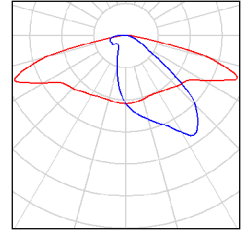
Arrangement complies with glare index class D.3.

Operator
Telephone
Fax
e-Mail

Odesas iela / Luminaire parts list

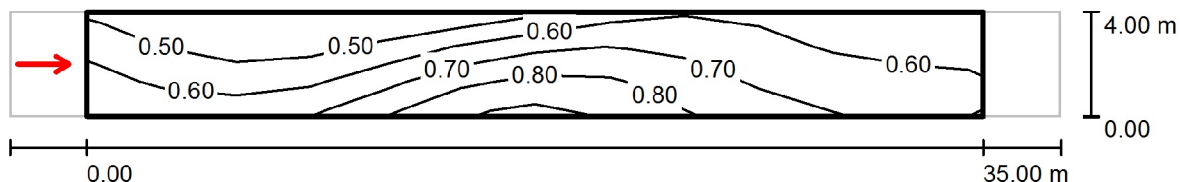
LED 52W
Article No.:
Luminous flux (Luminaire): 5557 lm
Luminous flux (Lamps): 5912 lm
Luminaire Wattage: 52.0 W
Luminaire classification according to CIE: 100
CIE flux code: 32 64 92 100 95
Fitting: 1 x NICHIA_N383 (Correction Factor
1.000).

See our luminaire
catalog for an image of
the luminaire.



Operator
Telephone
Fax
e-Mail

Odesas iela / Valuation Field Roadway 1 / Observer 1 / Isolines (L)



Values in Candela/m², Scale 1 : 294

Grid: 12 x 3 Points
Observer Position: (-60.000 m, 2.000 m, 1.500 m)
tarmac: R3, q0: 0.070

	L_{av} [cd/m²]	U0	UI	TI [%]
Calculated values:	0.63	0.64	0.63	11
Required values according to class ME5:	≥ 0.50	≥ 0.35	≥ 0.40	≤ 15
Fulfilled/Not fulfilled:	✓	✓	✓	✓

Operator
 Telephone
 Fax
 e-Mail

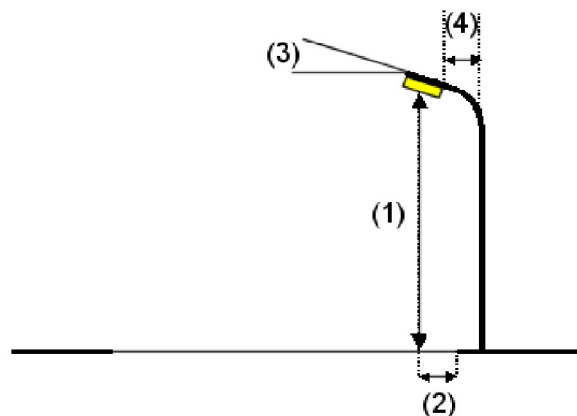
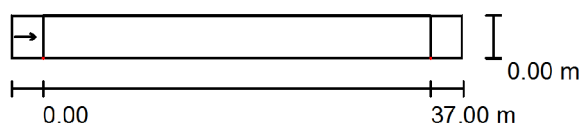
Ostrovska iela / Planning data

Street Profile

Roadway 1 (Width: 4.000 m, Number of lanes: 1, tarmac: R3, q0: 0.070)

Maintenance factor: 0.67

Luminaire Arrangements



Luminaire:	LED 52W
Luminous flux (Luminaire):	5557 lm
Luminous flux (Lamps):	5912 lm
Luminaire Wattage:	52.0 W
Arrangement:	Single row, bottom
Pole Distance:	37.000 m
Mounting Height (1):	8.000 m
Height:	8.000 m
Overhang (2):	0.000 m
Boom Angle (3):	5.0 °
Boom Length (4):	1.000 m

Maximum luminous intensities

at 70°:	591 cd/klm
at 80°:	109 cd/klm
at 90°:	44 cd/klm

Any direction forming the specified angle from the downward vertical, with the luminaire installed for use.

No luminous intensities above 95°.

Arrangement complies with luminous intensity class G1.

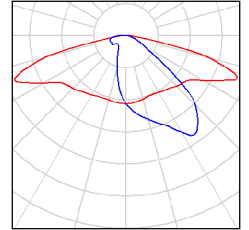
Arrangement complies with glare index class D.3.

Operator
Telephone
Fax
e-Mail

Ostrovskā iela / Luminaire parts list

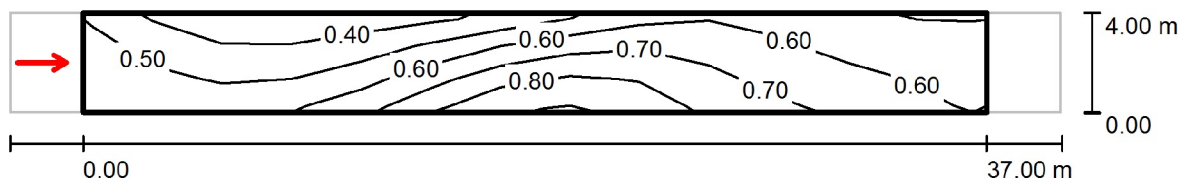
LED 52W
Article No.:
Luminous flux (Luminaire): 5557 lm
Luminous flux (Lamps): 5912 lm
Luminaire Wattage: 52.0 W
Luminaire classification according to CIE: 100
CIE flux code: 32 64 92 100 95
Fitting: 1 x NICHIA_N383 (Correction Factor
1.000).

See our luminaire
catalog for an image of
the luminaire.



Operator
 Telephone
 Fax
 e-Mail

Ostrovskā iela / Valuation Field Roadway 1 / Observer 1 / Isolines (L)



Values in Candela/m², Scale 1 : 308

Grid: 13 x 3 Points
 Observer Position: (-60.000 m, 2.000 m, 1.500 m)
 tarmac: R3, q0: 0.070

	L_{av} [cd/m ²]	U0	UI	TI [%]
Calculated values:	0.59	0.60	0.56	11
Required values according to class ME5:	≥ 0.50	≥ 0.35	≥ 0.40	≤ 15
Fulfilled/Not fulfilled:	✓	✓	✓	✓

Operator
Telephone
Fax
e-Mail

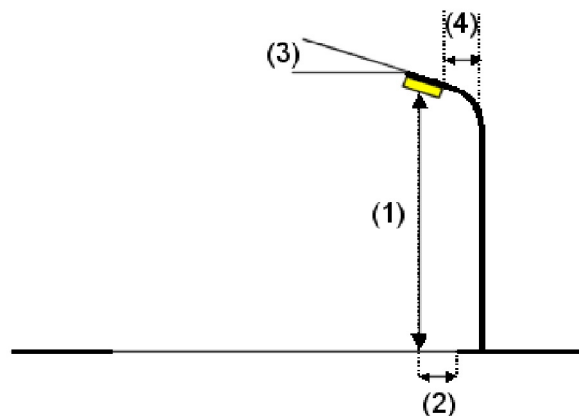
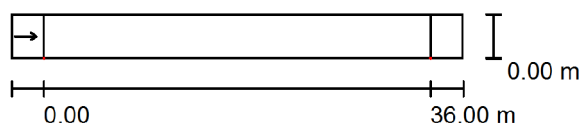
Pīlādžu iela / Planning data

Street Profile

Roadway 1 (Width: 4.000 m, Number of lanes: 1, tarmac: R3, q0: 0.070)

Maintenance factor: 0.67

Luminaire Arrangements



Luminaire:	LED 52W
Luminous flux (Luminaire):	5557 lm
Luminous flux (Lamps):	5912 lm
Luminaire Wattage:	52.0 W
Arrangement:	Single row, bottom
Pole Distance:	36.000 m
Mounting Height (1):	8.000 m
Height:	8.000 m
Overhang (2):	0.000 m
Boom Angle (3):	5.0 °
Boom Length (4):	1.000 m

Maximum luminous intensities

at 70°:	588 cd/klm
at 80°:	105 cd/klm
at 90°:	44 cd/klm

Any direction forming the specified angle from the downward vertical, with the luminaire installed for use.

No luminous intensities above 95°.

Arrangement complies with luminous intensity class G1.

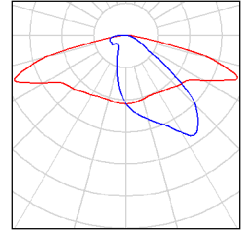
Arrangement complies with glare index class D.3.

Operator
Telephone
Fax
e-Mail

Pīlādžu iela / Luminaire parts list

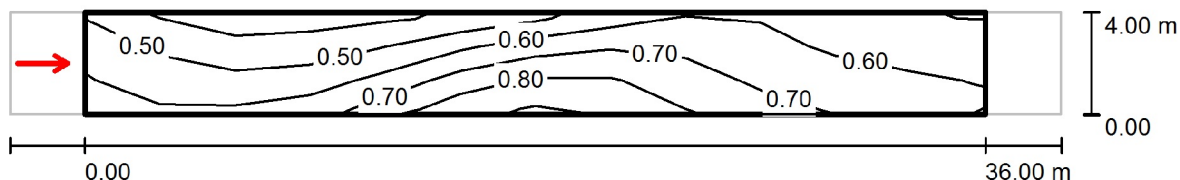
LED 52W
Article No.:
Luminous flux (Luminaire): 5557 lm
Luminous flux (Lamps): 5912 lm
Luminaire Wattage: 52.0 W
Luminaire classification according to CIE: 100
CIE flux code: 32 64 92 100 95
Fitting: 1 x NICHIA_N383 (Correction Factor
1.000).

See our luminaire
catalog for an image of
the luminaire.



Operator
 Telephone
 Fax
 e-Mail

Pīlādžu iela / Valuation Field Roadway 1 / Observer 1 / Isolines (L)



Values in Candela/m², Scale 1 : 301

Grid: 12 x 3 Points
 Observer Position: (-60.000 m, 2.000 m, 1.500 m)
 tarmac: R3, q0: 0.070

	L_{av} [cd/m ²]	U0	UI	TI [%]
Calculated values:	0.61	0.63	0.60	11
Required values according to class ME5:	≥ 0.50	≥ 0.35	≥ 0.40	≤ 15
Fulfilled/Not fulfilled:	✓	✓	✓	✓

Operator
 Telephone
 Fax
 e-Mail

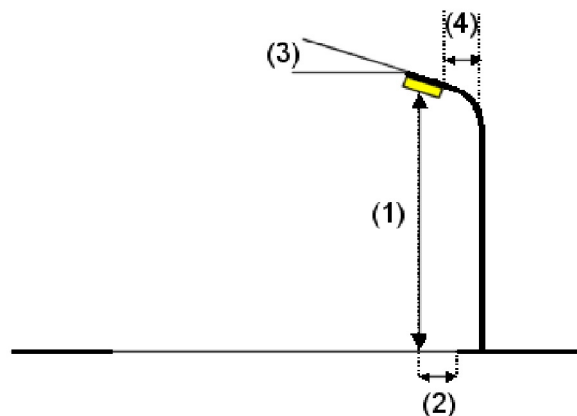
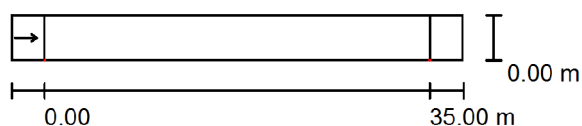
Tartakas iela / Planning data

Street Profile

Roadway 1 (Width: 4.000 m, Number of lanes: 1, tarmac: R3, q0: 0.070)

Maintenance factor: 0.67

Luminaire Arrangements



Luminaire:	LED 52W
Luminous flux (Luminaire):	5557 lm
Luminous flux (Lamps):	5912 lm
Luminaire Wattage:	52.0 W
Arrangement:	Single row, bottom
Pole Distance:	35.000 m
Mounting Height (1):	8.000 m
Height:	8.000 m
Overhang (2):	0.000 m
Boom Angle (3):	5.0 °
Boom Length (4):	1.000 m

Maximum luminous intensities	
at 70°:	588 cd/klm
at 80°:	105 cd/klm
at 90°:	44 cd/klm

Any direction forming the specified angle from the downward vertical, with the luminaire installed for use.

No luminous intensities above 95°.

Arrangement complies with luminous intensity class G1.

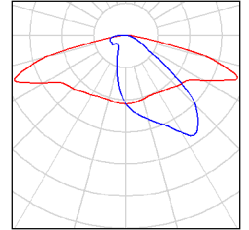
Arrangement complies with glare index class D.3.

Operator
Telephone
Fax
e-Mail

Tartakas iela / Luminaire parts list

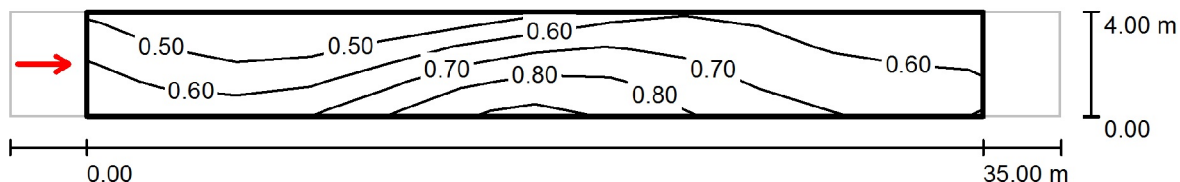
LED 52W
Article No.:
Luminous flux (Luminaire): 5557 lm
Luminous flux (Lamps): 5912 lm
Luminaire Wattage: 52.0 W
Luminaire classification according to CIE: 100
CIE flux code: 32 64 92 100 95
Fitting: 1 x NICHIA_N383 (Correction Factor
1.000).

See our luminaire
catalog for an image of
the luminaire.



Operator
Telephone
Fax
e-Mail

Tartakas iela / Valuation Field Roadway 1 / Observer 1 / Isolines (L)



Values in Candela/m², Scale 1 : 294

Grid: 12 x 3 Points
Observer Position: (-60.000 m, 2.000 m, 1.500 m)
tarmac: R3, q0: 0.070

	L_{av} [cd/m ²]	U0	UI	TI [%]
Calculated values:	0.63	0.64	0.63	11
Required values according to class ME5:	≥ 0.50	≥ 0.35	≥ 0.40	≤ 15
Fulfilled/Not fulfilled:	✓	✓	✓	✓

Operator
 Telephone
 Fax
 e-Mail

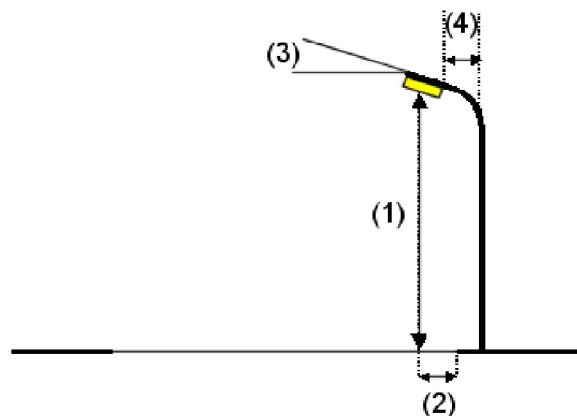
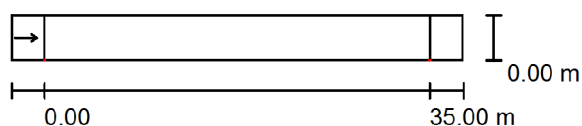
Vakaru iela / Planning data

Street Profile

Roadway 1 (Width: 4.000 m, Number of lanes: 1, tarmac: R3, q0: 0.070)

Maintenance factor: 0.67

Luminaire Arrangements



Luminaire:	LED 52W
Luminous flux (Luminaire):	5557 lm
Luminous flux (Lamps):	5912 lm
Luminaire Wattage:	52.0 W
Arrangement:	Single row, bottom
Pole Distance:	35.000 m
Mounting Height (1):	8.000 m
Height:	8.000 m
Overhang (2):	0.000 m
Boom Angle (3):	5.0 °
Boom Length (4):	1.000 m

Maximum luminous intensities	
at 70°:	588 cd/klm
at 80°:	105 cd/klm
at 90°:	44 cd/klm

Any direction forming the specified angle from the downward vertical, with the luminaire installed for use.

No luminous intensities above 95°.

Arrangement complies with luminous intensity class G1.

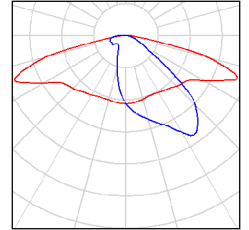
Arrangement complies with glare index class D.3.

Operator
Telephone
Fax
e-Mail

Vakaru iela / Luminaire parts list

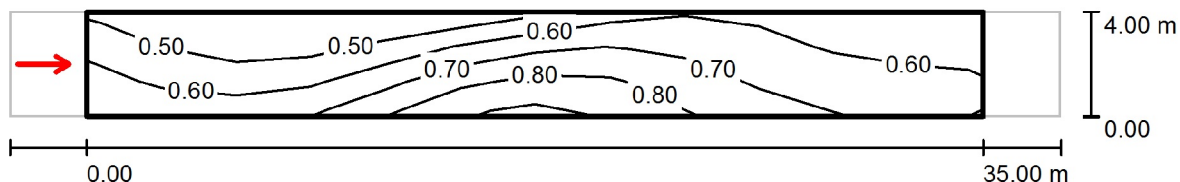
LED 52W
Article No.:
Luminous flux (Luminaire): 5557 lm
Luminous flux (Lamps): 5912 lm
Luminaire Wattage: 52.0 W
Luminaire classification according to CIE: 100
CIE flux code: 32 64 92 100 95
Fitting: 1 x NICHIA_N383 (Correction Factor
1.000).

See our luminaire
catalog for an image of
the luminaire.



Operator
Telephone
Fax
e-Mail

Vakaru iela / Valuation Field Roadway 1 / Observer 1 / Isolines (L)



Values in Candela/m², Scale 1 : 294

Grid: 12 x 3 Points
Observer Position: (-60.000 m, 2.000 m, 1.500 m)
tarmac: R3, q0: 0.070

	L_{av} [cd/m ²]	U0	UI	TI [%]
Calculated values:	0.63	0.64	0.63	11
Required values according to class ME5:	≥ 0.50	≥ 0.35	≥ 0.40	≤ 15
Fulfilled/Not fulfilled:	✓	✓	✓	✓

Operator
 Telephone
 Fax
 e-Mail

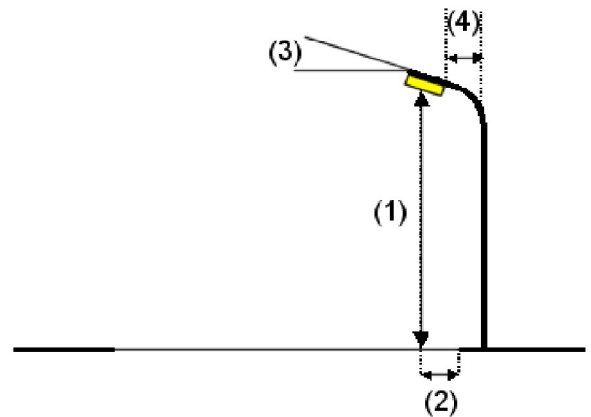
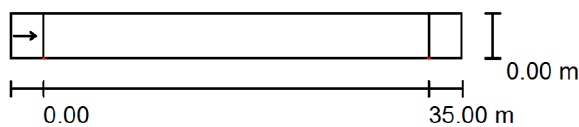
Vitebskas iela / Planning data

Street Profile

Roadway 1 (Width: 4.000 m, Number of lanes: 1, tarmac: R3, q0: 0.070)

Maintenance factor: 0.67

Luminaire Arrangements



Luminaire:	LED 52W
Luminous flux (Luminaire):	5557 lm
Luminous flux (Lamps):	5912 lm
Luminaire Wattage:	52.0 W
Arrangement:	Single row, bottom
Pole Distance:	35.000 m
Mounting Height (1):	8.000 m
Height:	8.000 m
Overhang (2):	0.000 m
Boom Angle (3):	5.0 °
Boom Length (4):	1.000 m

Maximum luminous intensities

at 70°:	588 cd/klm
at 80°:	105 cd/klm
at 90°:	44 cd/klm

Any direction forming the specified angle from the downward vertical, with the luminaire installed for use.

No luminous intensities above 95°.

Arrangement complies with luminous intensity class G1.

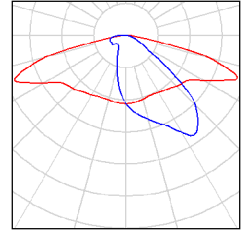
Arrangement complies with glare index class D.3.

Operator
Telephone
Fax
e-Mail

Vitebskas iela / Luminaire parts list

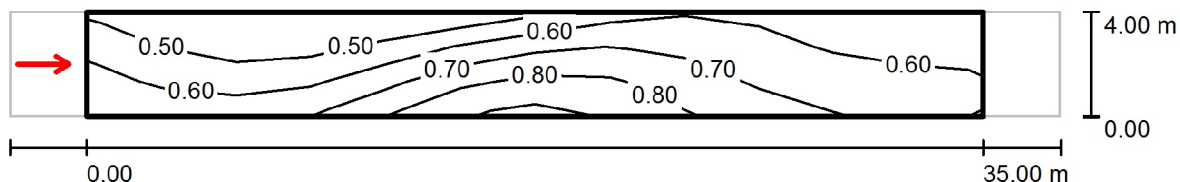
LED 52W
Article No.:
Luminous flux (Luminaire): 5557 lm
Luminous flux (Lamps): 5912 lm
Luminaire Wattage: 52.0 W
Luminaire classification according to CIE: 100
CIE flux code: 32 64 92 100 95
Fitting: 1 x NICHIA_N383 (Correction Factor
1.000).

See our luminaire
catalog for an image of
the luminaire.



Operator
 Telephone
 Fax
 e-Mail

Vitebskas iela / Valuation Field Roadway 1 / Observer 1 / Isolines (L)



Values in Candela/m², Scale 1 : 294

Grid: 12 x 3 Points
 Observer Position: (-60.000 m, 2.000 m, 1.500 m)
 tarmac: R3, q0: 0.070

	L_{av} [cd/m ²]	U0	UI	TI [%]
Calculated values:	0.63	0.64	0.63	11
Required values according to class ME5:	≥ 0.50	≥ 0.35	≥ 0.40	≤ 15
Fulfilled/Not fulfilled:	✓	✓	✓	✓

Operator
 Telephone
 Fax
 e-Mail

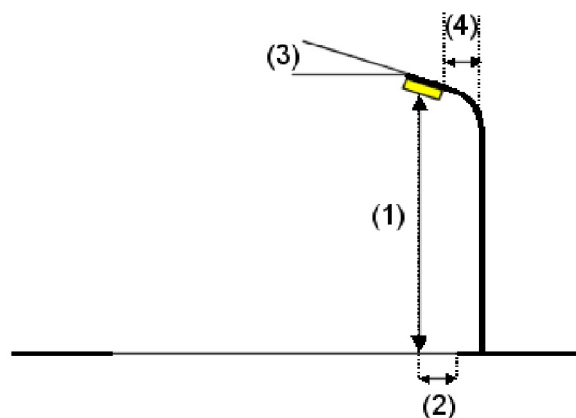
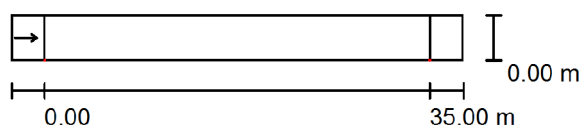
Īsā iela / Planning data

Street Profile

Roadway 1 (Width: 4.000 m, Number of lanes: 1, tarmac: R3, q0: 0.070)

Maintenance factor: 0.67

Luminaire Arrangements



Luminaire:	LED 52W
Luminous flux (Luminaire):	5557 lm
Luminous flux (Lamps):	5912 lm
Luminaire Wattage:	52.0 W
Arrangement:	Single row, bottom
Pole Distance:	35.000 m
Mounting Height (1):	8.000 m
Height:	8.000 m
Overhang (2):	0.000 m
Boom Angle (3):	5.0 °
Boom Length (4):	1.000 m

Maximum luminous intensities

at 70°:	588 cd/klm
at 80°:	105 cd/klm
at 90°:	44 cd/klm

Any direction forming the specified angle from the downward vertical, with the luminaire installed for use.

No luminous intensities above 95°.

Arrangement complies with luminous intensity class G1.

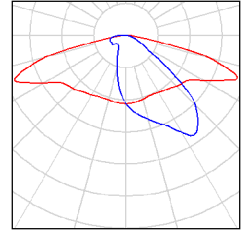
Arrangement complies with glare index class D.3.

Operator
Telephone
Fax
e-Mail

Īsā iela / Luminaire parts list

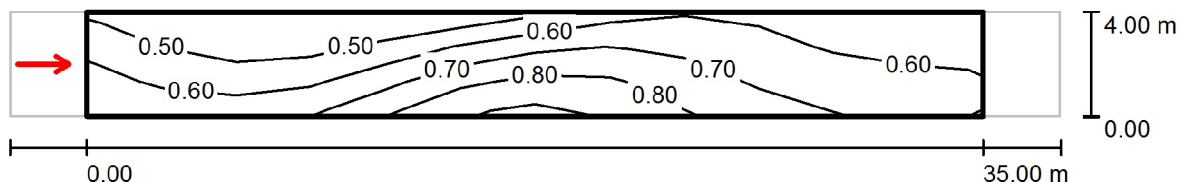
LED 52W
Article No.:
Luminous flux (Luminaire): 5557 lm
Luminous flux (Lamps): 5912 lm
Luminaire Wattage: 52.0 W
Luminaire classification according to CIE: 100
CIE flux code: 32 64 92 100 95
Fitting: 1 x NICHIA_N383 (Correction Factor
1.000).

See our luminaire
catalog for an image of
the luminaire.



Operator
Telephone
Fax
e-Mail

Īsā iela / Valuation Field Roadway 1 / Observer 1 / Isolines (L)



Values in Candela/m², Scale 1 : 294

Grid: 12 x 3 Points
Observer Position: (-60.000 m, 2.000 m, 1.500 m)
tarmac: R3, q0: 0.070

	L_{av} [cd/m ²]	U0	UI	TI [%]
Calculated values:	0.63	0.64	0.63	11
Required values according to class ME5:	≥ 0.50	≥ 0.35	≥ 0.40	≤ 15
Fulfilled/Not fulfilled:	✓	✓	✓	✓

Operator
 Telephone
 Fax
 e-Mail

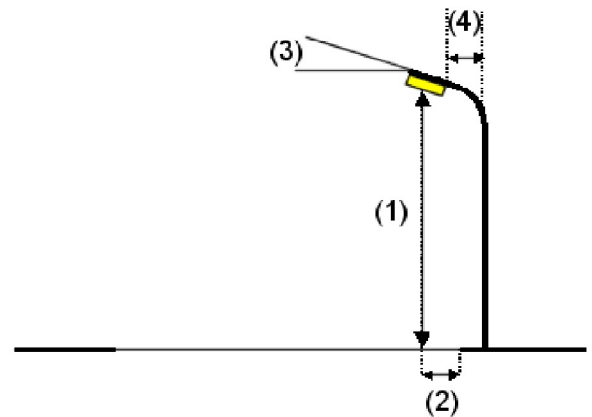
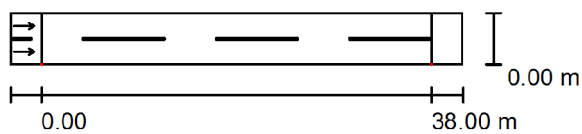
Tabores iela / Planning data

Street Profile

Roadway 1 (Width: 5.000 m, Number of lanes: 2, tarmac: R3, q0: 0.070)

Maintenance factor: 0.67

Luminaire Arrangements



Luminaire:	LED 65W
Luminous flux (Luminaire):	6355 lm
Luminous flux (Lamps):	6760 lm
Luminaire Wattage:	65.0 W
Arrangement:	Single row, bottom
Pole Distance:	38.000 m
Mounting Height (1):	8.000 m
Height:	8.000 m
Overhang (2):	0.000 m
Boom Angle (3):	5.0 °
Boom Length (4):	1.000 m

Maximum luminous intensities

at 70°:	588 cd/klm
at 80°:	105 cd/klm
at 90°:	44 cd/klm

Any direction forming the specified angle from the downward vertical, with the luminaire installed for use.

No luminous intensities above 95°.

Arrangement complies with luminous intensity class G1.

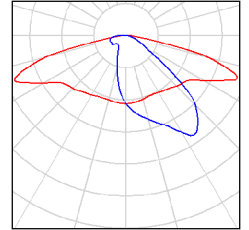
Arrangement complies with glare index class D.3.

Operator
Telephone
Fax
e-Mail

Tabores iela / Luminaire parts list

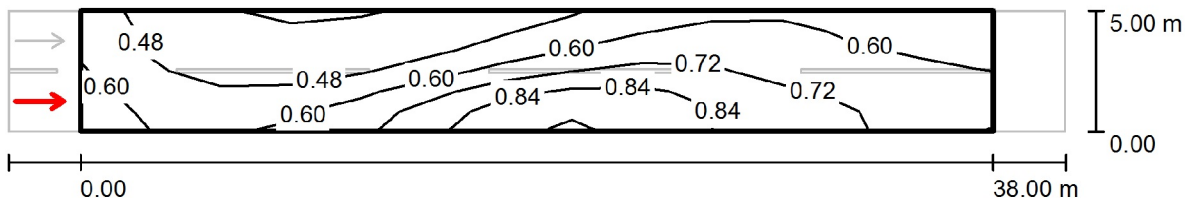
LED 65W
Article No.:
Luminous flux (Luminaire): 6355 lm
Luminous flux (Lamps): 6760 lm
Luminaire Wattage: 65.0 W
Luminaire classification according to CIE: 100
CIE flux code: 32 64 92 100 95
Fitting: 1 x NICHIA_N383 (Correction Factor
1.000).

See our luminaire
catalog for an image of
the luminaire.



Operator
 Telephone
 Fax
 e-Mail

Tabores iela / Valuation Field Roadway 1 / Observer 1 / Isolines (L)



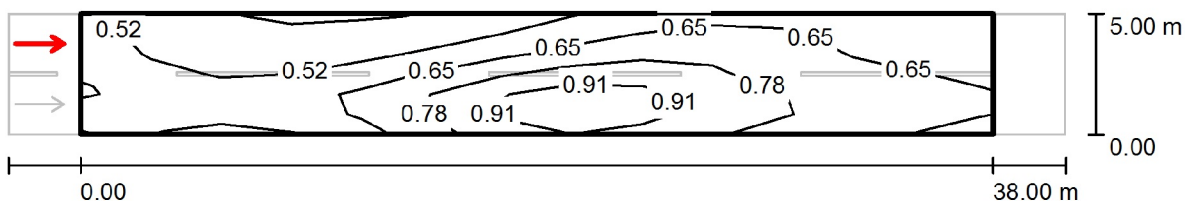
Values in Candela/m², Scale 1 : 315

Grid: 13 x 6 Points
 Observer Position: (-60.000 m, 1.250 m, 1.500 m)
 tarmac: R3, q0: 0.070

	L_{av} [cd/m ²]	U0	UI	TI [%]
Calculated values:	0.61	0.58	0.57	13
Required values according to class ME5:	≥ 0.50	≥ 0.35	≥ 0.40	≤ 15
Fulfilled/Not fulfilled:	✓	✓	✓	✓

Operator
 Telephone
 Fax
 e-Mail

Tabores iela / Valuation Field Roadway 1 / Observer 2 / Isolines (L)



Values in Candela/m², Scale 1 : 315

Grid: 13 x 6 Points
 Observer Position: (-60.000 m, 3.750 m, 1.500 m)
 tarmac: R3, q0: 0.070

	L_{av} [cd/m ²]	U0	UI	TI [%]
Calculated values:	0.65	0.58	0.55	12
Required values according to class ME5:	≥ 0.50	≥ 0.35	≥ 0.40	≤ 15
Fulfilled/Not fulfilled:	✓	✓	✓	✓

Operator
 Telephone
 Fax
 e-Mail

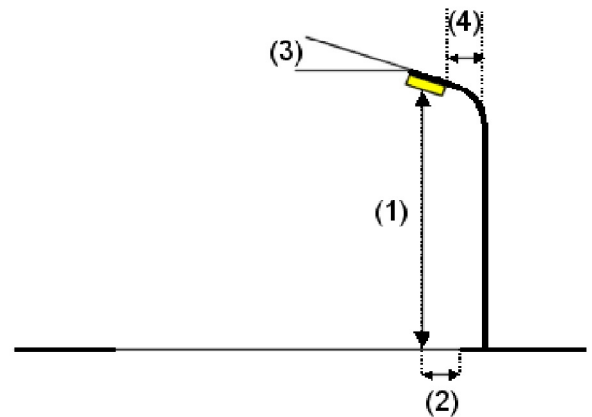
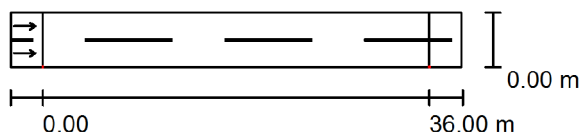
Zemnieku iela / Planning data

Street Profile

Roadway 1 (Width: 5.000 m, Number of lanes: 2, tarmac: R3, q0: 0.070)

Maintenance factor: 0.67

Luminaire Arrangements



Luminaire:	LED 65W
Luminous flux (Luminaire):	6355 lm
Luminous flux (Lamps):	6760 lm
Luminaire Wattage:	65.0 W
Arrangement:	Single row, bottom
Pole Distance:	36.000 m
Mounting Height (1):	8.000 m
Height:	8.000 m
Overhang (2):	0.000 m
Boom Angle (3):	5.0 °
Boom Length (4):	1.000 m

Maximum luminous intensities

at 70°:	588 cd/klm
at 80°:	105 cd/klm
at 90°:	44 cd/klm

Any direction forming the specified angle from the downward vertical, with the luminaire installed for use.

No luminous intensities above 95°.

Arrangement complies with luminous intensity class G1.

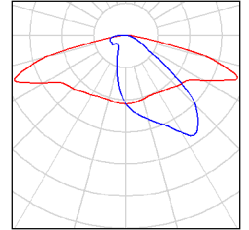
Arrangement complies with glare index class D.3.

Operator
Telephone
Fax
e-Mail

Zemnieku iela / Luminaire parts list

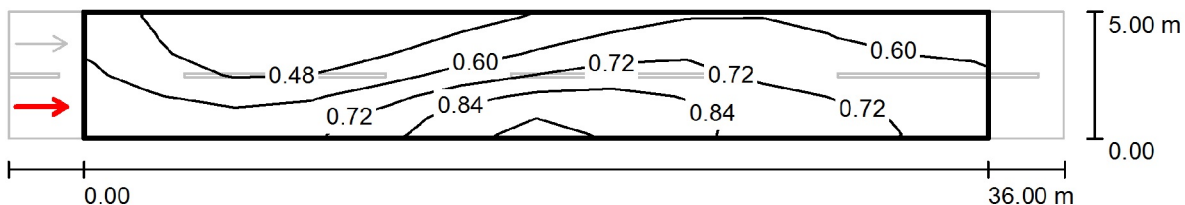
LED 65W
Article No.:
Luminous flux (Luminaire): 6355 lm
Luminous flux (Lamps): 6760 lm
Luminaire Wattage: 65.0 W
Luminaire classification according to CIE: 100
CIE flux code: 32 64 92 100 95
Fitting: 1 x NICHIA_N383 (Correction Factor
1.000).

See our luminaire
catalog for an image of
the luminaire.



Operator
 Telephone
 Fax
 e-Mail

Zemnieku iela / Valuation Field Roadway 1 / Observer 1 / Isolines (L)



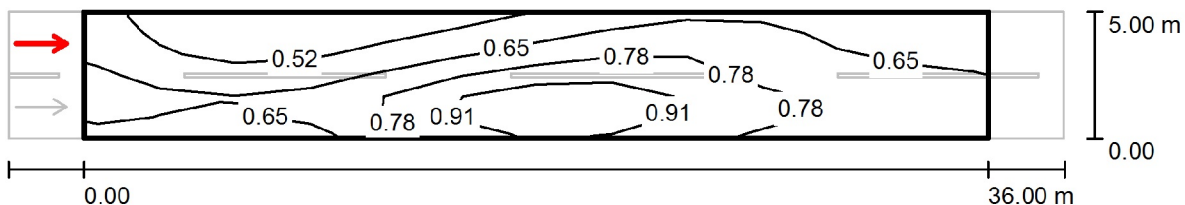
Values in Candela/m², Scale 1 : 301

Grid: 12 x 6 Points
 Observer Position: (-60.000 m, 1.250 m, 1.500 m)
 tarmac: R3, q0: 0.070

	L_{av} [cd/m ²]	U0	UI	TI [%]
Calculated values:	0.64	0.58	0.64	13
Required values according to class ME5:	≥ 0.50	≥ 0.35	≥ 0.40	≤ 15
Fulfilled/Not fulfilled:	✓	✓	✓	✓

Operator
 Telephone
 Fax
 e-Mail

Zemnieku iela / Valuation Field Roadway 1 / Observer 2 / Isolines (L)



Values in Candela/m², Scale 1 : 301

Grid: 12 x 6 Points
 Observer Position: (-60.000 m, 3.750 m, 1.500 m)
 tarmac: R3, q0: 0.070

	L_{av} [cd/m ²]	U0	UI	TI [%]
Calculated values:	0.69	0.59	0.60	11
Required values according to class ME5:	≥ 0.50	≥ 0.35	≥ 0.40	≤ 15
Fulfilled/Not fulfilled:	✓	✓	✓	✓

Operator
 Telephone
 Fax
 e-Mail

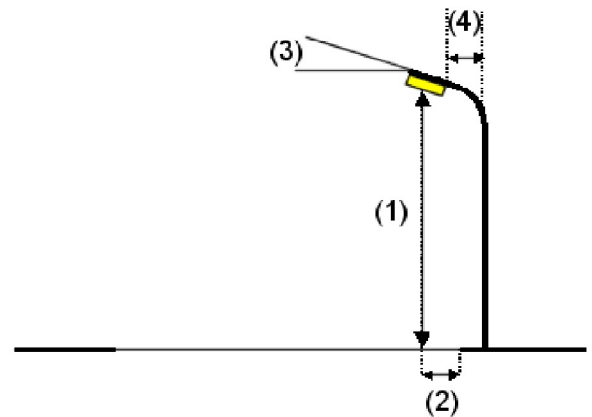
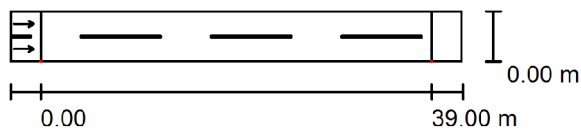
Tiruma iela / Planning data

Street Profile

Roadway 1 (Width: 5.000 m, Number of lanes: 2, tarmac: R3, q0: 0.070)

Maintenance factor: 0.67

Luminaire Arrangements



Luminaire:	LED 65W
Luminous flux (Luminaire):	6355 lm
Luminous flux (Lamps):	6760 lm
Luminaire Wattage:	65.0 W
Arrangement:	Single row, bottom
Pole Distance:	39.000 m
Mounting Height (1):	8.000 m
Height:	8.000 m
Overhang (2):	0.000 m
Boom Angle (3):	5.0 °
Boom Length (4):	1.000 m

Maximum luminous intensities	
at 70°:	588 cd/klm
at 80°:	105 cd/klm
at 90°:	44 cd/klm

Any direction forming the specified angle from the downward vertical, with the luminaire installed for use.

No luminous intensities above 95°.

Arrangement complies with luminous intensity class G1.

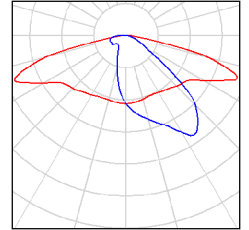
Arrangement complies with glare index class D.3.

Operator
Telephone
Fax
e-Mail

Tiruma iela / Luminaire parts list

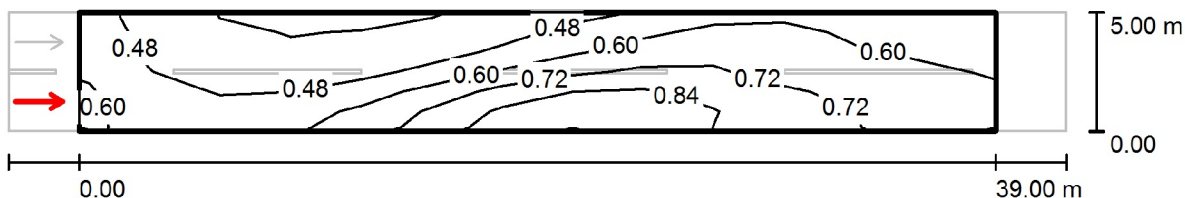
LED 65W
Article No.:
Luminous flux (Luminaire): 6355 lm
Luminous flux (Lamps): 6760 lm
Luminaire Wattage: 65.0 W
Luminaire classification according to CIE: 100
CIE flux code: 32 64 92 100 95
Fitting: 1 x NICHIA_N383 (Correction Factor
1.000).

See our luminaire
catalog for an image of
the luminaire.



Operator
 Telephone
 Fax
 e-Mail

Tiruma iela / Valuation Field Roadway 1 / Observer 1 / Isolines (L)



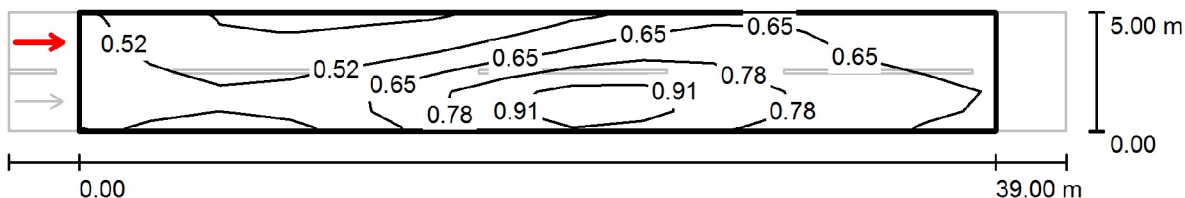
Values in Candela/m², Scale 1 : 322

Grid: 13 x 6 Points
 Observer Position: (-60.000 m, 1.250 m, 1.500 m)
 tarmac: R3, q0: 0.070

	L_{av} [cd/m ²]	U0	UI	TI [%]
Calculated values:	0.60	0.57	0.54	13
Required values according to class ME5:	≥ 0.50	≥ 0.35	≥ 0.40	≤ 15
Fulfilled/Not fulfilled:	✓	✓	✓	✓

Operator
 Telephone
 Fax
 e-Mail

Tiruma iela / Valuation Field Roadway 1 / Observer 2 / Isolines (L)



Values in Candela/m², Scale 1 : 322

Grid: 13 x 6 Points
 Observer Position: (-60.000 m, 3.750 m, 1.500 m)
 tarmac: R3, q0: 0.070

	L_{av} [cd/m ²]	U0	UI	TI [%]
Calculated values:	0.64	0.58	0.53	12
Required values according to class ME5:	≥ 0.50	≥ 0.35	≥ 0.40	≤ 15
Fulfilled/Not fulfilled:	✓	✓	✓	✓

Operator
 Telephone
 Fax
 e-Mail

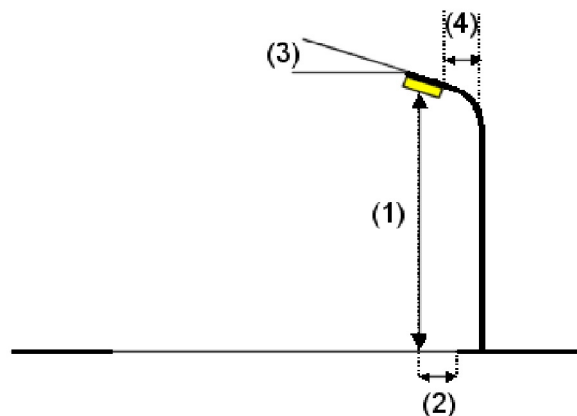
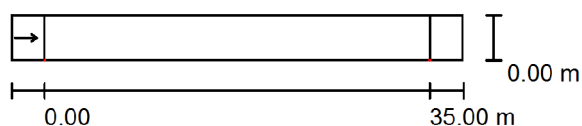
Riekstu iela / Planning data

Street Profile

Roadway 1 (Width: 4.000 m, Number of lanes: 1, tarmac: R3, q0: 0.070)

Maintenance factor: 0.67

Luminaire Arrangements



Luminaire:	LED 52W
Luminous flux (Luminaire):	5557 lm
Luminous flux (Lamps):	5912 lm
Luminaire Wattage:	52.0 W
Arrangement:	Single row, bottom
Pole Distance:	35.000 m
Mounting Height (1):	8.000 m
Height:	8.000 m
Overhang (2):	0.000 m
Boom Angle (3):	5.0 °
Boom Length (4):	1.000 m

Maximum luminous intensities	
at 70°:	588 cd/klm
at 80°:	105 cd/klm
at 90°:	44 cd/klm

Any direction forming the specified angle from the downward vertical, with the luminaire installed for use.

No luminous intensities above 95°.

Arrangement complies with luminous intensity class G1.

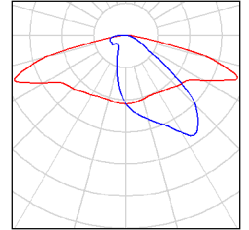
Arrangement complies with glare index class D.3.

Operator
Telephone
Fax
e-Mail

Riekstu iela / Luminaire parts list

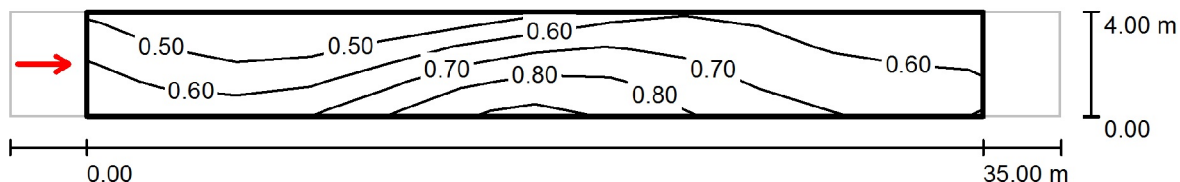
LED 52W
Article No.:
Luminous flux (Luminaire): 5557 lm
Luminous flux (Lamps): 5912 lm
Luminaire Wattage: 52.0 W
Luminaire classification according to CIE: 100
CIE flux code: 32 64 92 100 95
Fitting: 1 x NICHIA_N383 (Correction Factor
1.000).

See our luminaire
catalog for an image of
the luminaire.



Operator
Telephone
Fax
e-Mail

Riekstu iela / Valuation Field Roadway 1 / Observer 1 / Isolines (L)



Values in Candela/m², Scale 1 : 294

Grid: 12 x 3 Points
Observer Position: (-60.000 m, 2.000 m, 1.500 m)
tarmac: R3, q0: 0.070

	L_{av} [cd/m ²]	U0	UI	TI [%]
Calculated values:	0.63	0.64	0.63	11
Required values according to class ME5:	≥ 0.50	≥ 0.35	≥ 0.40	≤ 15
Fulfilled/Not fulfilled:	✓	✓	✓	✓

Operator
Telephone
Fax
e-Mail

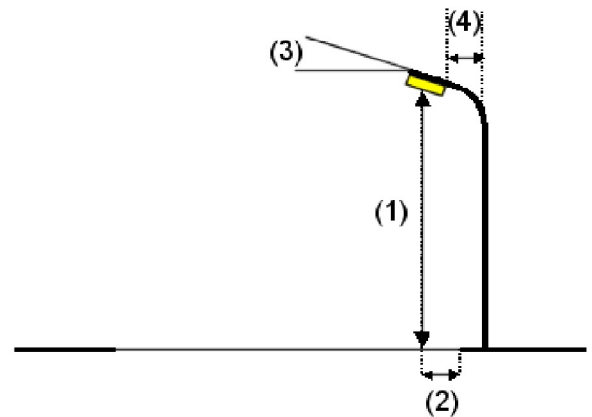
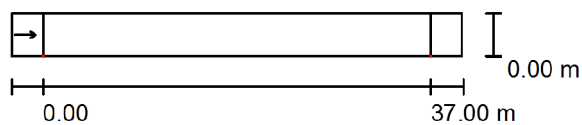
Apiņu iela / Planning data

Street Profile

Roadway 1 (Width: 4.000 m, Number of lanes: 1, tarmac: R3, q0: 0.070)

Maintenance factor: 0.67

Luminaire Arrangements



Luminaire:	LED 52W
Luminous flux (Luminaire):	5557 lm
Luminous flux (Lamps):	5912 lm
Luminaire Wattage:	52.0 W
Arrangement:	Single row, bottom
Pole Distance:	37.000 m
Mounting Height (1):	8.000 m
Height:	8.000 m
Overhang (2):	0.000 m
Boom Angle (3):	5.0 °
Boom Length (4):	1.000 m

Maximum luminous intensities

at 70°:	588 cd/klm
at 80°:	105 cd/klm
at 90°:	44 cd/klm

Any direction forming the specified angle from the downward vertical, with the luminaire installed for use.

No luminous intensities above 95°.

Arrangement complies with luminous intensity class G1.

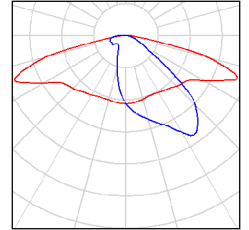
Arrangement complies with glare index class D.3.

Operator
Telephone
Fax
e-Mail

Apiņu iela / Luminaire parts list

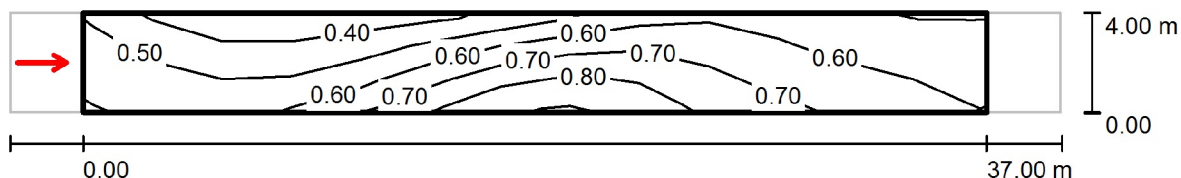
LED 52W
Article No.:
Luminous flux (Luminaire): 5557 lm
Luminous flux (Lamps): 5912 lm
Luminaire Wattage: 52.0 W
Luminaire classification according to CIE: 100
CIE flux code: 32 64 92 100 95
Fitting: 1 x NICHIA_N383 (Correction Factor
1.000).

See our luminaire
catalog for an image of
the luminaire.



Operator
Telephone
Fax
e-Mail

Apiņu iela / Valuation Field Roadway 1 / Observer 1 / Isolines (L)



Values in Candela/m², Scale 1 : 308

Grid: 13 x 3 Points
Observer Position: (-60.000 m, 2.000 m, 1.500 m)
tarmac: R3, q0: 0.070

	L_{av} [cd/m ²]	U0	UI	TI [%]
Calculated values:	0.59	0.61	0.57	12
Required values according to class ME5:	≥ 0.50	≥ 0.35	≥ 0.40	≤ 15
Fulfilled/Not fulfilled:	✓	✓	✓	✓

Operator
Telephone
Fax
e-Mail

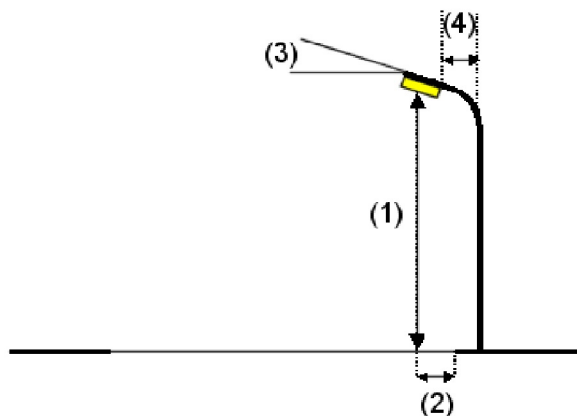
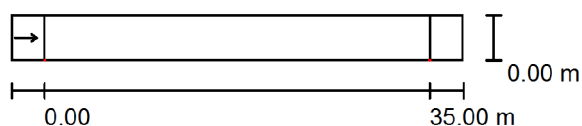
Kurpnieku iela / Planning data

Street Profile

Roadway 1 (Width: 4.000 m, Number of lanes: 1, tarmac: R3, q0: 0.070)

Maintenance factor: 0.67

Luminaire Arrangements



Luminaire:	LED 52W
Luminous flux (Luminaire):	5557 lm
Luminous flux (Lamps):	5912 lm
Luminaire Wattage:	52.0 W
Arrangement:	Single row, bottom
Pole Distance:	35.000 m
Mounting Height (1):	8.000 m
Height:	8.000 m
Overhang (2):	0.000 m
Boom Angle (3):	5.0 °
Boom Length (4):	1.000 m

Maximum luminous intensities

at 70°:	588 cd/klm
at 80°:	105 cd/klm
at 90°:	44 cd/klm

Any direction forming the specified angle from the downward vertical, with the luminaire installed for use.

No luminous intensities above 95°.

Arrangement complies with luminous intensity class G1.

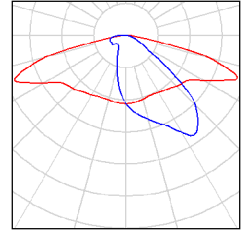
Arrangement complies with glare index class D.3.

Operator
Telephone
Fax
e-Mail

Kurpnieku iela / Luminaire parts list

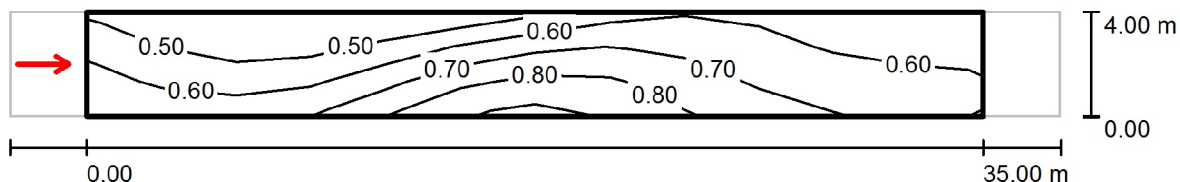
LED 52W
Article No.:
Luminous flux (Luminaire): 5557 lm
Luminous flux (Lamps): 5912 lm
Luminaire Wattage: 52.0 W
Luminaire classification according to CIE: 100
CIE flux code: 32 64 92 100 95
Fitting: 1 x NICHIA_N383 (Correction Factor
1.000).

See our luminaire
catalog for an image of
the luminaire.



Operator
Telephone
Fax
e-Mail

Kurpnieku iela / Valuation Field Roadway 1 / Observer 1 / Isolines (L)



Values in Candela/m², Scale 1 : 294

Grid: 12 x 3 Points
Observer Position: (-60.000 m, 2.000 m, 1.500 m)
tarmac: R3, q0: 0.070

	L_{av} [cd/m ²]	U0	UI	TI [%]
Calculated values:	0.63	0.64	0.63	11
Required values according to class ME5:	≥ 0.50	≥ 0.35	≥ 0.40	≤ 15
Fulfilled/Not fulfilled:	✓	✓	✓	✓